



**2021 DSHS Arbovirus Activity Report  
Week #46 (ending November 20, 2021)  
Report Date: November 23, 2021**

**Table 1. 2021 Arbovirus Activity Summary, Texas, Week 46**

Arbovirus	Positive Mosquito Pools	Avian	Equine	Sentinel Chicken	Human					
					Febrile Illness	Neurologic Illness	Severe Dengue	TOTAL (HUMAN)	Deaths	PVD <sup>2</sup>
California Serogroup <sup>1</sup>								0		
Chikungunya								0		
Dengue					9		1	10		
Eastern Equine Encephalitis	2		6					0		
St. Louis Encephalitis	34			4				0		
West Nile	1511	10	7	12	8	50		58	4	46
Zika								0		
<b>TOTAL REPORTS</b>	<b>1547</b>	<b>10</b>	<b>13</b>	<b>16</b>	<b>17</b>	<b>50</b>	<b>1</b>	<b>68</b>	<b>4</b>	<b>46</b>

<sup>1</sup>California Serogroup includes California encephalitis, Jamestown Canyon, Keystone, La Crosse, snowshoe hare, and trivittatus viruses.

<sup>2</sup>PVD - Presumptive viremic blood donors are people who had no symptoms at the time of donating blood through a blood collection agency, but whose blood tested positive when screened for the presence of West Nile virus or Zika virus. Unless they meet the case reporting criteria, they are not counted as a case for official reporting purposes and are not included in the "Total (HUMAN)" column.

Note: Human mortality from arboviral conditions is aggregated and reported monthly once documentation has been received and verified.

For more detailed information about West Nile virus, including past weekly and annual reports, please visit <http://www.dshs.texas.gov/idcu/disease/arboviral/westNile/>

For more detailed information about Zika, please visit <http://www.texaszika.org/>

**Table 2. 2021 Aedes-Associated Arbovirus Activity by County†, Week 46**

County	CHIKV		DENV*		ZIKV		
	M	H	M	H	M	H	PVD
Bexar				2			
Brazoria				1			
Collin				1			
Denton				1			
Harris				1			
Maverick				1			
Montgomery				1			
Tarrant				1			
Travis				1			
Total Number of Reports	0	0	0	10	0	0	0

M - mosquito H- human

CHIKV - Chikungunya Virus

DENV - Dengue Virus

ZIKV - Zika Virus

\* All reported cases are imported.

†County level data is not reported for conditions with <5 cases reported in a year.

**Table 3. 2021 Other Arbovirus Activity by County†, Week 46**

County	CAL		EEEV				SLEV			WNV							
	M	H	M	E	SC	H	M	SC	H	M	A	E	SC	H			
														WNF	WNND	PVD‡	TOTAL
Armstrong										0						1	0
Bexar										1					1	1	1
Bowie				2						0							0
Brazoria										10					2		2
Brazos										10						1	0
Cameron										2							0
Carson										0						2	0
Childress										0						1	0
Collin										51						3	0
Cooke										1							0
Dallas										342				3	18	3	21
Denton										55					2		2
El Paso							27			74					8	4	8
Ellis										9						1	0
Fort Bend										11					1	1	1
Freestone										0		1					0
Galveston							5	4		5			12	1	2	3	3
Gray										0					1		1
Grayson										1		1					0
Harris				1						325	10				2	12	2
Henderson				1						0							0
Hood										0		1					0
Hunt										18							0
Jasper			1	1						0							0
Johnson										56						1	0
Kleberg										9							0
Leon				1						0							0
Lubbock							2			38		2			2	1	2
Montgomery										121					2	1	2
Nueces										25							0
Ochiltree										0						1	0
Orange			1							0							0
Parker										0						1	0
Parmer										0				1	1		2
Potter										1						2	0
Randall										0				1	2	3	3
Reeves										0		1					0
Scurry										0		1					0

Tarrant										319				2	2	2	4
Taylor										1							0
Travis										8					3		3
Wichita										9							0
Williamson										9						1	0
Yoakum										0					1		1
Total Number of Reports	0	0	2	6	0	0	34	4	0	1511	10	7	12	8	50	46	58

M - mosquito A-avian E-equine SC- sentinel chicken H- human WNF - West Nile Fever WNND - West Nile Neuroinvasive Disease

CAL - California Serogroup Viruses

EEEV - Eastern Equine Encephalitis Virus

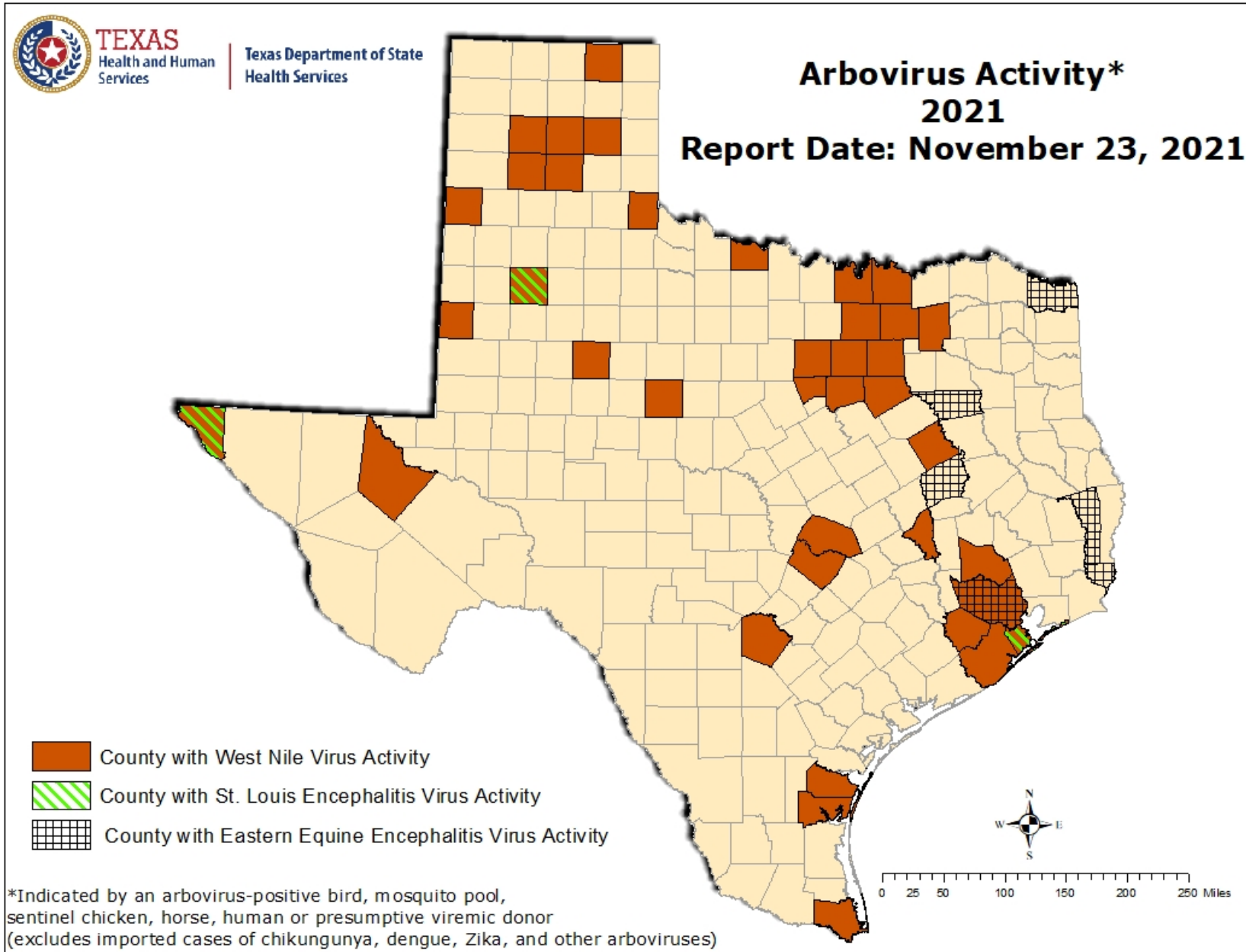
SLEV - St. Louis Encephalitis Virus

WNV - West Nile Virus

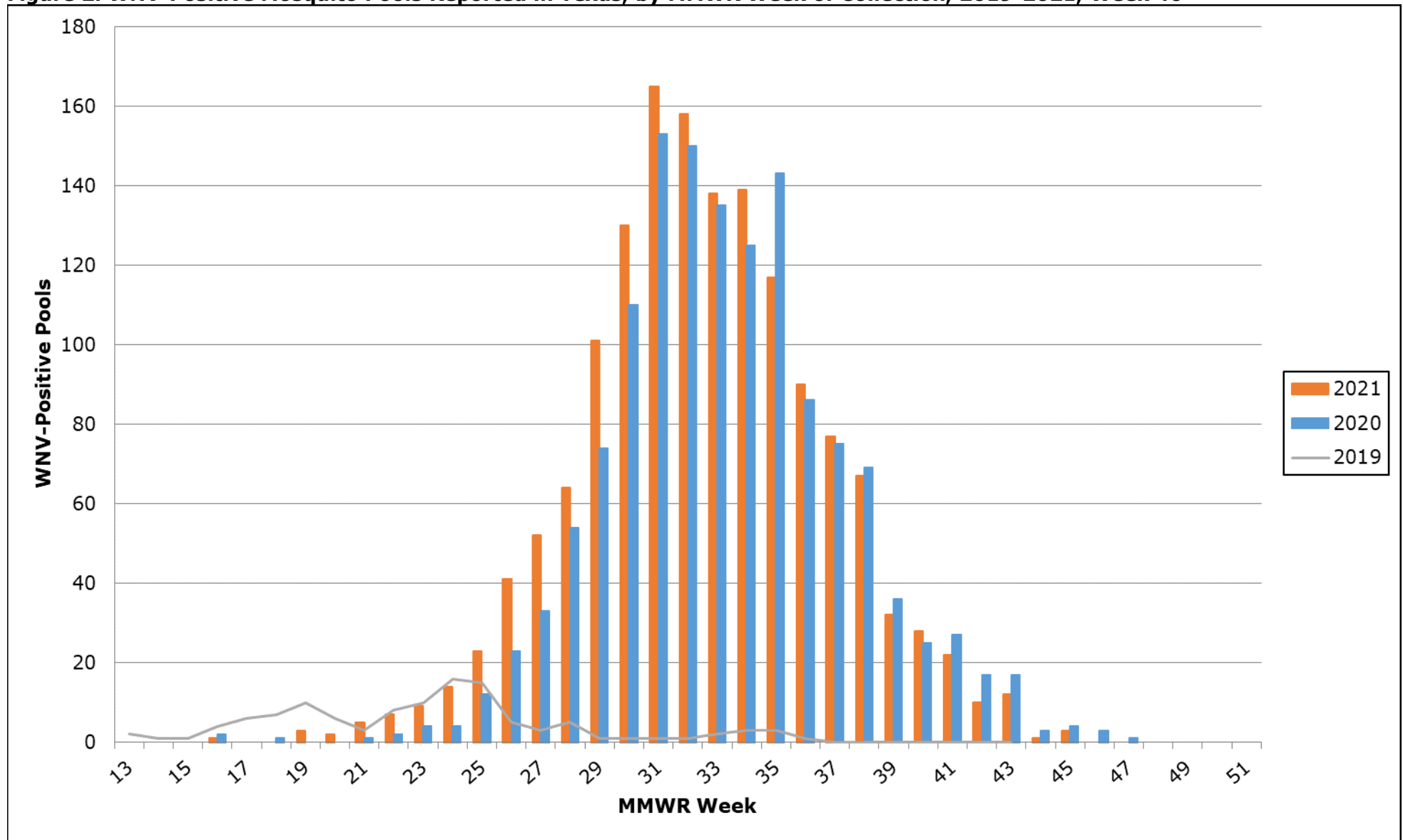
†County level data is not reported for conditions with <5 cases reported in a year.

‡PVDs are not included in the "Total" column.

Figure 1. Texas Counties Reporting Arbovirus Activity, Week 46



**Figure 2. WNV-Positive Mosquito Pools Reported in Texas, by MMWR Week of Collection, 2019-2021, Week 46**



**Figure 3. Human Cases of West Nile Virus Reported in Texas, by MMWR Week of Onset, 2019-2021, Week 46**

