



**2022 DSHS Arbovirus Activity Report
Week #33 (ending August 20, 2022)
Report Date: August 23, 2022**

Table 1. 2022 Arbovirus Activity Summary, Texas, Week 33

Arbovirus	Mosquito Pools	Avian	Veterinary	Sentinel Chicken	Human					
					Febrile Illness	Neurologic Illness	Severe Dengue	TOTAL (HUMAN)	Deaths	PVD ²
California Serogroup ¹								0		
Chikungunya								0		
Dengue					8			8		
Eastern Equine Encephalitis								0		
St. Louis Encephalitis	1							0		
West Nile	182					7		7	1	4
Zika								0		
TOTAL REPORTS	183	0	0	0	8	7	0	15	1	4

¹California Serogroup includes California encephalitis, Jamestown Canyon, Keystone, La Crosse, snowshoe hare, and trivittatus viruses.

²PVD - Presumptive viremic blood donors are people who had no symptoms at the time of donating blood through a blood collection agency, but whose blood tested positive when screened for the presence of West Nile virus or Zika virus. Unless they meet the case reporting criteria, they are not counted as a case for official reporting purposes and are not included in the "Total (HUMAN)" column.

Note: Human mortality from arboviral conditions is aggregated and reported monthly once documentation has been received and verified.

For more detailed information about West Nile virus, including past weekly and annual reports, please visit <http://www.dshs.texas.gov/idcu/disease/arboviral/westNile/>

For more detailed information about Zika, please visit <http://www.texaszika.org/>

Table 2. 2022 Aedes-Associated Arbovirus Activity by County†, Week 33

County	CHIKV		DENV*		ZIKV		
	M	H	M	H	M	H	PVD
Dallas				3			
Hays				1			
Tarrant				1			
Travis				2			
Williamson				1			
Total Number of Reports	0	0	0	8	0	0	0

M - mosquito H- human

CHIKV - Chikungunya Virus

DENV - Dengue Virus

ZIKV - Zika Virus

* All reported cases are imported.

†County level data is not reported for conditions with <5 cases reported in a year.

Table 3. 2022 Other Arbovirus Activity by County†, Week 33

County	CAL		EEEV				SLEV			WNV							
	M	H	M	V	SC	H	M	SC	H	M	A	V	SC	H			
														WNF	WNND	PVD‡	TOTAL
Collin										14							0
Dallas										11					1		1
Denton										8							0
El Paso							1			4							0
Harris										37					1	1	1
Lubbock										3							0
Montgomery										95					5	3	5
Tarrant										8							0
Travis										2							0
Total Number of Reports	0	0	0	0	0	0	1	0	0	182	0	0	0	0	7	4	7

M - mosquito A-avian V-veterinary SC- sentinel chicken H- human WNF - West Nile Fever WNND - West Nile Neuroinvasive Disease

CAL - California Serogroup Viruses

EEEV - Eastern Equine Encephalitis Virus

SLEV - St. Louis Encephalitis Virus

WNV - West Nile Virus

†County level data is not reported for conditions with <5 cases reported in a year.

‡PVDs are not included in the "Total" column.

Figure 1. Texas Counties Reporting Arbovirus Activity, Week 33

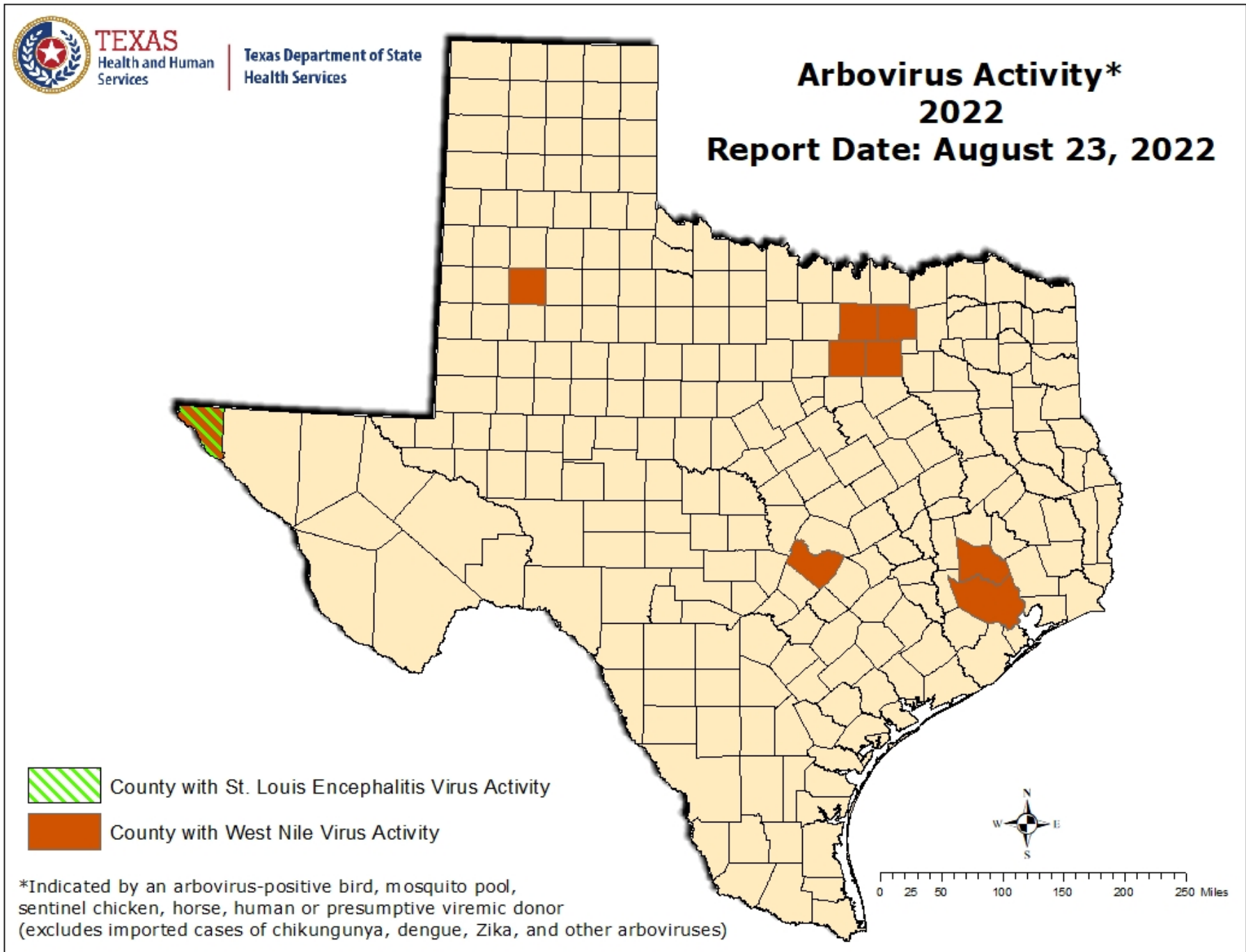


Figure 2. WNV-Positive Mosquito Pools Reported in Texas, by MMWR Week of Collection, 2020-2022, Week 33

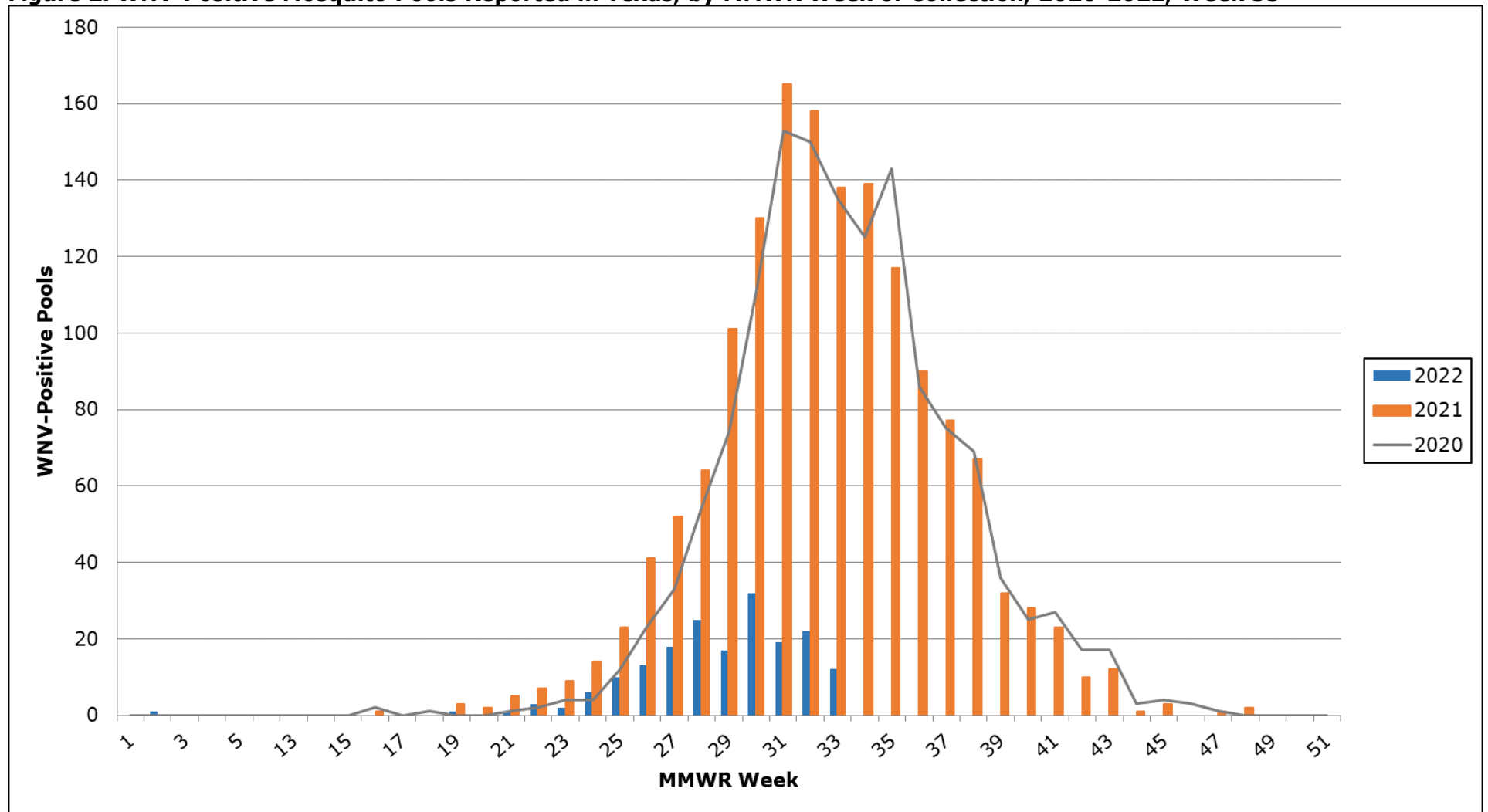


Figure 3. Human Cases of West Nile Virus Reported in Texas, by MMWR Week of Onset, 2020-2022, Week 33

