

**Surveillance**

En Español

Influenza

(Flu)

ICD-9 487; ICD-10 J10,11

Related Topics: [Protecting Yourself During the Cold and Flu Season](#), [Avian Flu](#), [Vaccine Preventable Diseases and SARS](#)**2008 - 2009 Texas Influenza Surveillance Information****Influenza Surveillance Report for MMWR Week 12**

The influenza (flu) activity level for Texas for the week ending March 28, 2009 was "regional." During week 12, 39 (5.8%) specimens tested by NREVSS laboratories in Texas were positive for influenza. The percentage of visits for influenza-like illness as reported by ILINet providers in Texas was below the regional baseline.

**Reports from Health Service Regions**

Reports were received from all Health Service Regions (HSRs) for week 12. HSR 8 reported the same level of flu activity compared to week 11. All other HSRs reported a decreased level of flu activity compared to week 11. For a map of Health Service Regions, please visit the following website:

<http://www.dshs.state.tx.us/regions/state.shtm>

**Laboratory Results**

During week 12, nine hospital laboratories and public health agencies across Texas reported conducting a total of 670 influenza tests (antigen, culture, and PCR) to the National Respiratory and Enteric Virus Surveillance System (NREVSS) sponsored by the Centers for Disease Control and Prevention (CDC). Of the 567 antigen detection tests that were performed, 25 were positive for influenza A/not subtyped and 11 were positive for influenza B. The positive results were reported from Bell, Collin, Dallas, Harris, Lubbock, Nueces, and Tarrant counties. Four PCR tests positive for influenza A/H1 and four PCR tests positive for influenza B were reported for Bell and Harris counties. [There may be some overlap in the PCR and culture positive results described in this report (i.e., some of the PCR results may be from some of the same patients as the culture results).] A total of 16 reports of culture-confirmed influenza were received from public health laboratories, Scott & White Memorial Hospital in Temple, Texas Children's Hospital in Houston, the United States Air Force School of Aerospace Medicine, and other sources for the following counties:

Influenza A/H1	Influenza A/H3	Influenza A/not subtyped	Influenza B
Travis County	Bexar County	(none)	Dallas County (8) Harris County (4) McLennan County Wichita County

Additional positive results from point-of-care rapid flu tests were reported by providers throughout the state (see Texas map below).

**Antigenic Characterization**

CDC has reported antigenic characterization results from 41 influenza isolates [18 influenza A/H1, 5 influenza A/H3, and 18 influenza B viruses] received from the DSHS Laboratory since the beginning of the 2008-09 flu season.

Influenza A/H1 [18]

- All 18 viruses were characterized as A/Brisbane/59/2007, the influenza A/H1 component of the 2008-09 influenza vaccine for the Northern Hemisphere.

Influenza A/H3 [5]

- All 5 viruses were characterized as A/Brisbane/10/2007, the influenza A/H3 component of the 2008-09 influenza vaccine for the Northern Hemisphere.

Influenza B (B/Victoria/02/87 and B/Yamagata/16/88 lineages) [18]

Victoria lineage [12]

- Two (17%) of the twelve viruses were characterized as B/Ohio/01/2005-like viruses.
- Ten (83%) of the twelve viruses showed somewhat reduced titers with antisera produced against B/Malaysia/2506/2004 and B/Ohio/01/2005.

Yamagata lineage [6]

- Six viruses were characterized as B/Florida/4/2006, the influenza B component for the 2008-09 influenza vaccine for the Northern Hemisphere.

**Antiviral Resistance**

Since September 28, 2008, 19 influenza A/H1 isolates, 5 influenza A/H3 isolates, and 17 influenza B isolates from the DSHS laboratory have been tested by CDC for antiviral resistance.

	Isolates Tested (n)	Resistant Viruses, Number (%)		Isolates Tested (n)	Resistant Viruses, Number (%)
		Oseltamivir	Zanamivir		Adamantanes
Influenza A/H1	19	18 (95%)	0 (0)	19	0 (0)
Influenza A/H3	5	0 (0)	0 (0)	5	5 (100%)
Influenza B	17	0 (0)	0 (0)	N/A*	N/A*

\*Adamantanes are not effective against influenza B viruses.

CDC has issued interim recommendations for use of antiviral medications in the 2008-09 influenza season. Those recommendations are available at:

<http://www.cdc.gov/flu/professionals/antivirals/index.htm>.

**Influenza-Associated Pediatric Mortality**

No influenza-associated pediatric fatalities were reported during week 12. Texas has reported eight influenza-associated pediatric fatalities during the 2008-09 influenza season.

**School Closures and Institutional Outbreaks**

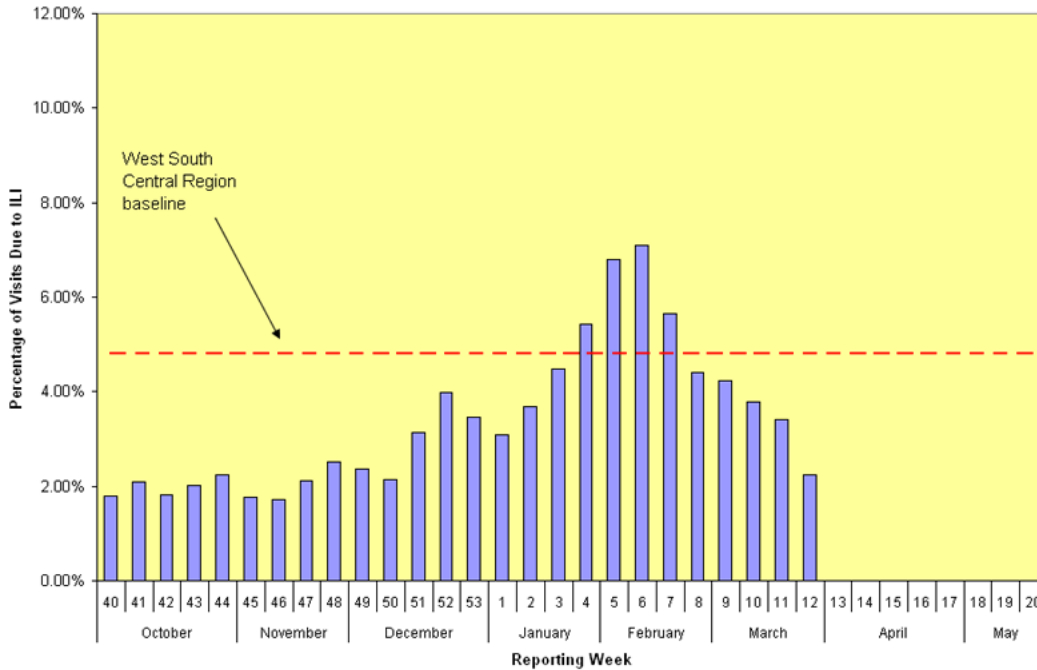
No school closures or institutional outbreaks were reported in week 12.

**U.S. Outpatient Influenza-like Illness Surveillance Network**

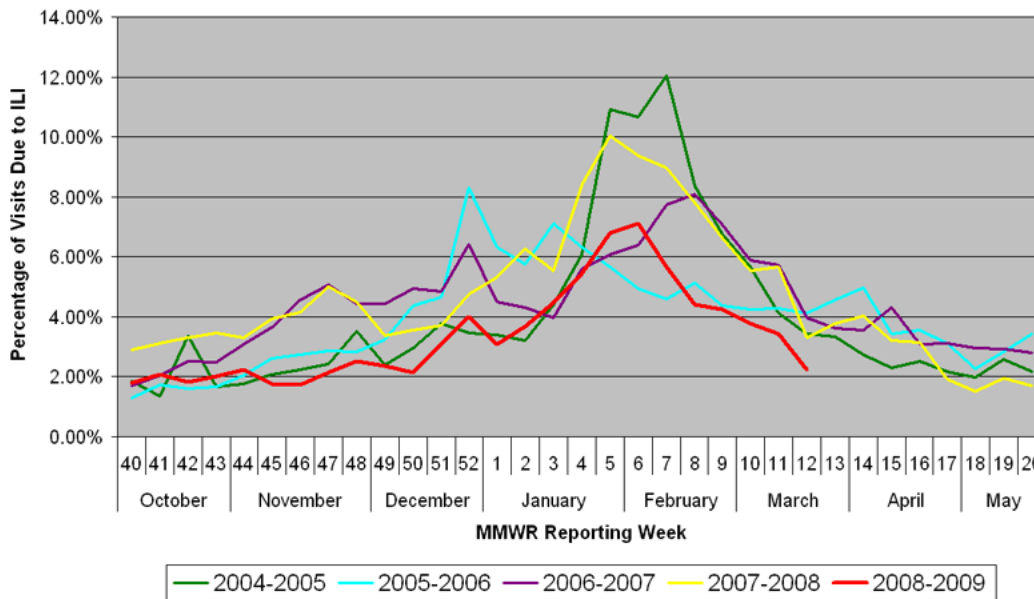
Fifty-four providers in Texas reported data to the U.S. Outpatient Influenza-like Illness Surveillance Network (ILINet) (formerly known as the U.S. Influenza Sentinel Provider Surveillance System) on patients with influenza-like illness (ILI) and total patients seen for any reason during week 12. Of the 53 providers who reported seeing patients during week 12, 23 (43%) saw at least one patient with ILI. Of all patient visits during this week, 2.24% were due to ILI. The ILI baseline for the West South Central Region (Arkansas, Louisiana, Oklahoma, and Texas) of the United States is 4.8% for the 2008-2009 season. The baseline is the mean percentage of patient visits for ILI during non-influenza weeks for the previous three seasons plus two standard deviations.

Percentage of Visits for Influenza-Like Illness Reported by the US Outpatient Influenza-Like Illness Surveillance Network (ILINet) in Texas as of 4/3/2009 11:02:53 AM								
Week	# Reporting	Age 0-4	Age 5-24	Age 25-64	Age over 64	Total ILI	Total Patients	% ILI
2008-40	78	84	133	127	22	366	20333	1.80
2008-41	78	114	163	124	19	420	20105	2.09
2008-42	79	107	156	90	7	360	19746	1.82
2008-43	79	120	152	106	20	398	19740	2.02
2008-44	80	136	199	103	26	464	20737	2.24
2008-45	78	110	111	122	27	370	20835	1.78
2008-46	73	110	106	103	23	342	19771	1.73
2008-47	75	137	143	122	19	421	19806	2.13
2008-48	79	131	132	125	37	425	16905	2.51
2008-49	77	143	159	153	24	479	20343	2.35
2008-50	75	133	146	108	28	415	19330	2.15
2008-51	69	172	177	175	24	548	17531	3.13
2008-52	76	194	153	154	34	535	13431	3.98
2008-53	77	176	141	165	46	528	15222	3.47
2009-01	78	162	182	188	38	570	18518	3.08
2009-02	77	178	287	235	41	741	20094	3.69
2009-03	78	174	468	341	43	1026	22951	4.47
2009-04	78	260	679	332	47	1318	24244	5.44
2009-05	73	282	883	465	40	1670	24590	6.79
2009-06	79	301	964	391	59	1715	24162	7.10
2009-07	79	320	814	316	57	1507	26669	5.65
2009-08	73	221	552	283	57	1113	25314	4.40
2009-09	75	193	417	244	71	925	21800	4.24
2009-10	78	221	322	210	77	830	21958	3.78
2009-11	71	159	259	168	58	644	18841	3.42
2009-12	54	88	128	168	15	399	17849	2.24

**Percentage of Visits Due to Influenza-Like Illness (ILI),  
Texas Providers in the U.S. Outpatient Influenza-like Illness Surveillance Network,  
2008–2009**

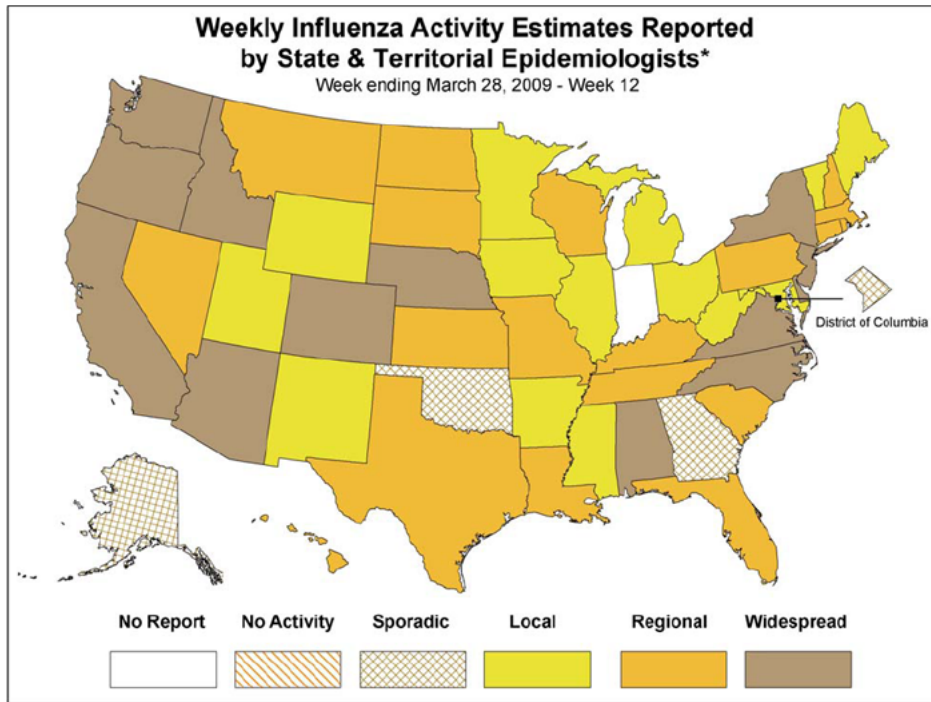


**Influenza-Like Illness (ILI) Data  
Texas Providers in the U.S. Outpatient Influenza-like Illness Surveillance Network  
Flu Seasons 2004–2009**



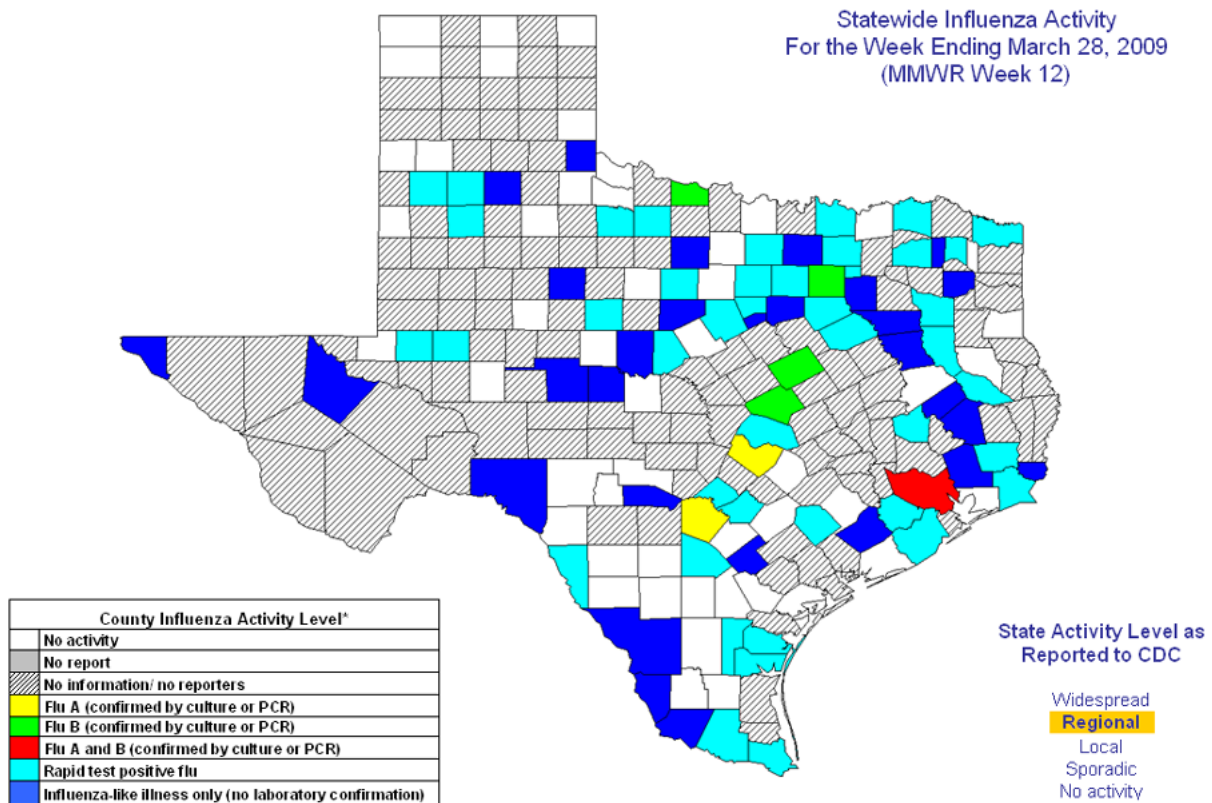
**National Influenza Activity Map**

The map showing influenza activity in the United States for MMWR week 12 is displayed below. The current U.S. flu weekly report may be found at: [here](#).



\*This map indicates geographic spread and does not measure the severity of influenza activity.

For more information on flu surveillance activities in the State of Texas, please visit our main surveillance page.



\*Influenza activity level corresponds to current MMWR week only and does not reflect previous weeks' activity.

Last Updated: Friday, April 03, 2009

Texas Department of State Health Services - Infectious Disease Control Unit  
 1100 West 49th Street, Suite T801, Mail Code: 1960 PO BOX 149347 - Austin, TX 78714-9347  
 (512) 458-7676 - Fax: (512) 458-7616 - E-Mail

Topics A-Z / Site Map