

Surveillance

[En Español](#)


Influenza

(Flu)

ICD-9 487; ICD-10 J10,11

 Related Topics: [Protecting Yourself During the Cold and Flu Season](#), [Avian Flu](#), [Vaccine Preventable Diseases](#) and [SARS](#)

2008 - 2009 Texas Influenza Surveillance Information

Influenza Surveillance Report for MMWR Week 15

The influenza (flu) activity level for Texas for the week ending April 18, 2009 was "local." During week 15, one (0.4%) specimen tested by NREVSS laboratories in Texas was positive for influenza. The percentage of visits for influenza-like illness as reported by ILINet providers in Texas was below the regional baseline.

Reports from Health Service Regions

Reports were received from all Health Service Regions (HSRs) for week 15. HSRs 4/5N and 6/5S reported the same level of flu activity compared to week 14. All other HSRs reported a decreased level of flu activity compared to week 14. For a map of Health Service Regions, please visit the following website:

<http://www.dshs.state.tx.us/regions/state.shtm>

Laboratory Results

During week 15, six hospital laboratories and public health agencies across Texas reported conducting a total of 263 influenza tests (antigen, culture, and PCR) to the National Respiratory and Enteric Virus Surveillance System (NREVSS [®]) sponsored by the Centers for Disease Control and Prevention (CDC). Of the 211 antigen detection tests that were performed, one specimen from Harris County was positive for influenza A/not subtyped. No positive PCR test results were reported during week 15. Two reports of culture-confirmed seasonal influenza were received from public health laboratories in Austin and Houston. The specimens were submitted from Harris and Lubbock counties, and both were positive for influenza B. Positive point-of-care rapid tests for influenza were reported by providers throughout the state (see county map below).

Novel Influenza A Virus Infections

Two novel influenza A virus infections in Texas residents were reported to the Centers for Disease Control and Prevention (CDC) during week 15. These infections were reported in two 16-year-old residents of Guadalupe County; their onsets of symptoms occurred during week 14 (week ending April 11, 2009) and week 15 (week ending April 18, 2009), respectively. The specimens were collected and the viruses identified through routine influenza surveillance activities; the isolates were further identified by CDC as swine influenza A (H1N1) viruses. Thorough case and contact investigations are ongoing. Please see <http://www.cdc.gov/flu/swine/> for more information on the current investigation.

Antigenic Characterization

CDC has reported antigenic characterization results from 48 influenza isolates [20 influenza A/H1, 6 influenza A/H3, and 22 influenza B viruses] received from the DSHS Laboratory since the beginning of the 2008-09 flu season.

Influenza A/H1 [20]

- All 20 viruses were characterized as A/Brisbane/59/2007, the influenza A/H1 component of the 2008-09 influenza vaccine for the Northern Hemisphere.

Influenza A/H3 [6]

- All 6 viruses were characterized as A/Brisbane/10/2007, the influenza A/H3 component of the 2008-09 influenza vaccine for the Northern Hemisphere.

Influenza B (B/Victoria/02/87 and B/Yamagata/16/88 lineages) [22]

Victoria lineage [15]

- Fifteen of the influenza B viruses were characterized as belonging to the B/Victoria lineage.

Yamagata lineage [7]

- Seven viruses were characterized as B/Florida/4/2006, the influenza B component for the 2008-09 influenza vaccine for the Northern Hemisphere.

Antiviral Resistance

Since September 28, 2008, 21 seasonal influenza A/H1 isolates, 6 influenza A/H3 isolates, and 21 influenza B isolates from the DSHS laboratory have been tested by CDC for antiviral resistance.

	Isolates Tested (n)	Resistant Viruses, Number (%)		Isolates Tested (n)	Resistant Viruses, Number (%)
		Oseltamivir	Zanamivir		Adamantanes
Influenza A/H1	21	21 (100%)	0 (0)	21	0 (0)
Influenza A/H3	6	0 (0)	0 (0)	6	6 (100%)
Influenza B	21	0 (0)	0 (0)	N/A*	N/A*

*Adamantanes are not effective against influenza B viruses.

CDC has issued interim recommendations for use of antiviral medications in the 2008-09 influenza season. Those recommendations are available at:

<http://www.cdc.gov/flu/professionals/antivirals/index.htm>.

Influenza-Associated Pediatric Mortality

No influenza-associated pediatric fatalities were reported during week 15. Texas has reported ten influenza-associated pediatric fatalities during the 2008-09 influenza season.

School Closures and Institutional Outbreaks

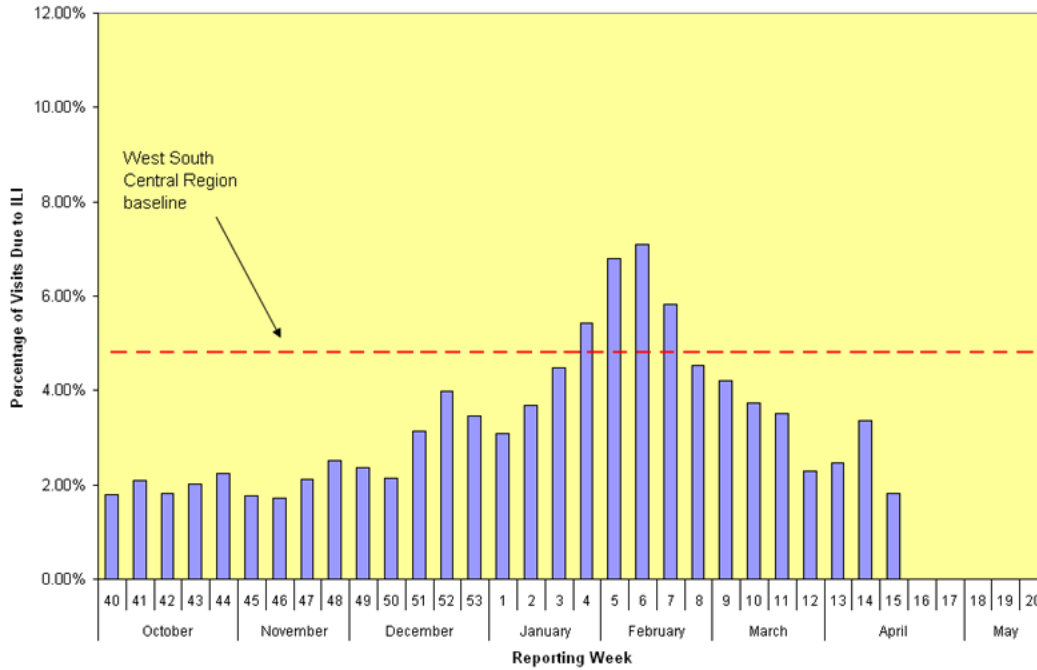
No school closures or institutional outbreaks were reported in week 15.

U.S. Outpatient Influenza-like Illness Surveillance Network

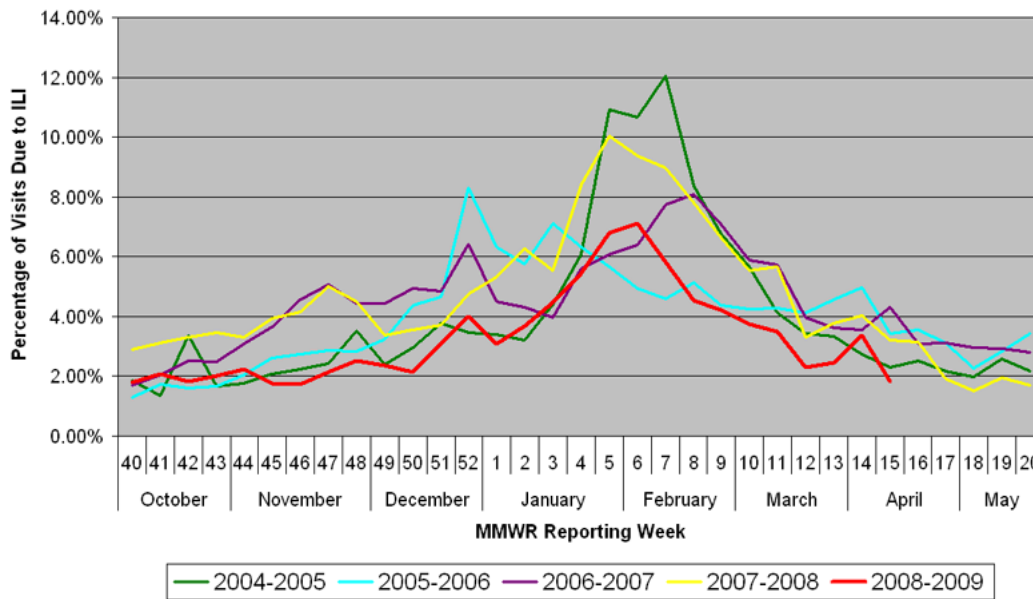
Fifty-three providers in Texas reported data to the U.S. Outpatient Influenza-like Illness Surveillance Network (ILINet) (formerly known as the U.S. Influenza Sentinel Provider Surveillance System) on patients with influenza-like illness (ILI) and total patients seen for any reason during week 15. Of the 52 providers who reported seeing patients during week 15, 18 (35%) saw at least one patient with ILI. Of all patient visits during this week, 1.83% were due to ILI. The ILI baseline for the West South Central Region (Arkansas, Louisiana, Oklahoma, and Texas) of the United States is 4.8% for the 2008-2009 season. The baseline is the mean percentage of patient visits for ILI during non-influenza weeks for the previous three seasons plus two standard deviations.

Percentage of Visits for Influenza-Like Illness Reported by the US Outpatient Influenza-Like Illness Surveillance Network (ILINet) in Texas as of 4/24/2009 6:01:01 PM								
Week	# Reporting	Age 0-4	Age 5-24	Age 25-64	Age over 64	Total ILI	Total Patients	% ILI
2008-40	78	84	133	127	22	366	20333	1.80
2008-41	78	114	163	124	19	420	20105	2.09
2008-42	79	107	156	90	7	360	19746	1.82
2008-43	79	120	152	106	20	398	19740	2.02
2008-44	80	136	199	103	26	464	20737	2.24
2008-45	78	110	111	122	27	370	20835	1.78
2008-46	73	110	106	103	23	342	19771	1.73
2008-47	75	137	143	122	19	421	19806	2.13
2008-48	79	131	132	125	37	425	16905	2.51
2008-49	77	143	159	153	24	479	20343	2.35
2008-50	75	133	146	108	28	415	19330	2.15
2008-51	69	172	177	175	24	548	17531	3.13
2008-52	76	194	153	154	34	535	13431	3.98
2008-53	77	176	141	165	46	528	15222	3.47
2009-01	78	162	182	188	38	570	18518	3.08
2009-02	77	178	287	235	41	741	20094	3.69
2009-03	78	174	468	341	43	1026	22951	4.47
2009-04	78	260	679	332	47	1318	24244	5.44
2009-05	73	282	883	465	40	1670	24590	6.79
2009-06	79	301	964	391	59	1715	24162	7.10
2009-07	79	320	814	316	57	1507	25873	5.82
2009-08	73	221	552	283	57	1113	24526	4.54
2009-09	76	194	422	244	71	931	22111	4.21
2009-10	79	221	324	212	77	834	22341	3.73
2009-11	74	167	268	178	58	671	19156	3.50
2009-12	68	109	150	179	18	456	19962	2.28
2009-13	67	114	141	163	16	434	17659	2.46
2009-14	68	158	192	232	51	633	18858	3.36
2009-15	53	57	104	132	19	312	17095	1.83

**Percentage of Visits Due to Influenza-Like Illness (ILI),
Texas Providers in the U.S. Outpatient Influenza-like Illness Surveillance Network,
2008–2009**

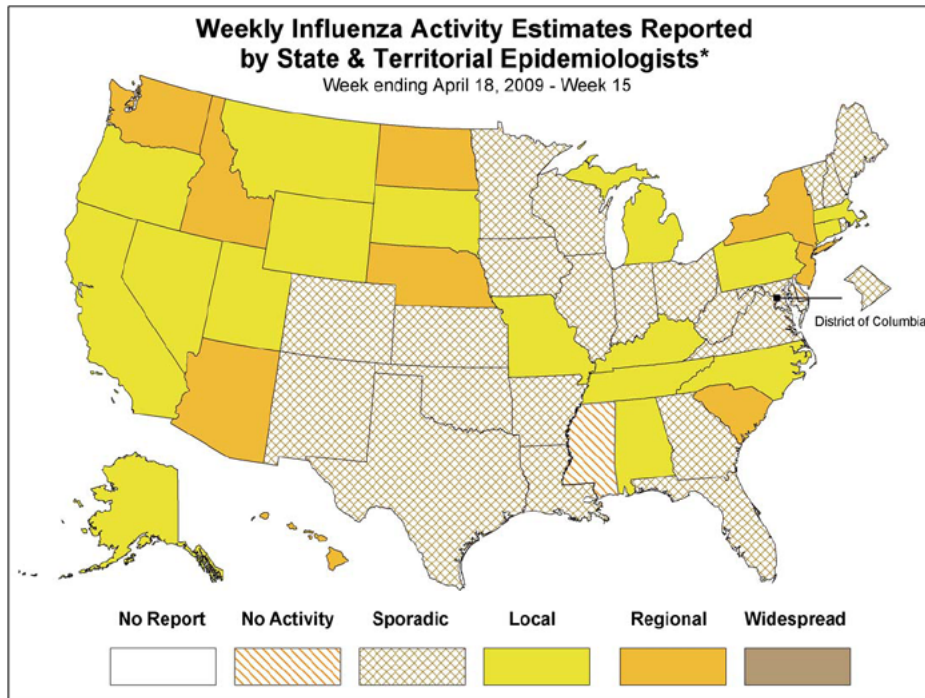


**Influenza-Like Illness (ILI) Data
Texas Providers in the U.S. Outpatient Influenza-like Illness Surveillance Network
Flu Seasons 2004–2009**



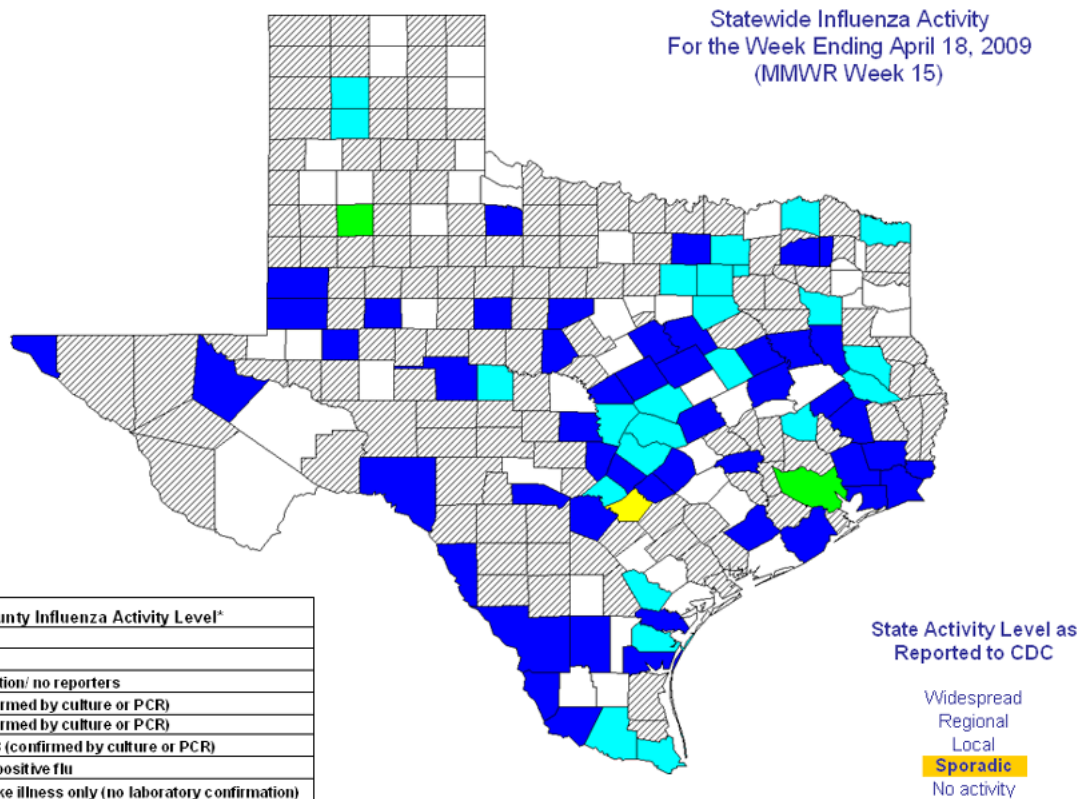
National Influenza Activity Map

The map showing influenza activity in the United States for MMWR week 15 is displayed below. The current U.S. flu weekly report may be found at: [here](#).



*This map indicates geographic spread and does not measure the severity of influenza activity.

For more information on flu surveillance activities in the State of Texas, please visit our main surveillance page.



*Influenza activity level corresponds to current MMWR week only and does not reflect previous weeks' activity.

Last Updated: Friday, April 24, 2009

Texas Department of State Health Services - Infectious Disease Control Unit
1100 West 49th Street, Suite T801, Mail Code: 1960 PO BOX 149347 - Austin, TX 78714-9347
(512) 458-7676 - Fax: (512) 458-7616 - E-Mail

Topics A-Z / Site Map