

## Texas Influenza Surveillance Report 2020-2021 Season/2021 MMWR Week 24

(June 13, 2021 – June 19, 2021)  
Report produced on 6/25/2021

### Summary

\*Please note, some aspects of influenza surveillance may be affected by current COVID-19 response activities. For information about COVID-19 in Texas, please visit [www.dshs.texas.gov/coronavirus](http://www.dshs.texas.gov/coronavirus).

Compared to the previous week, the percentage of specimens testing positive for influenza reported by hospital laboratories has decreased. The percentage of patient visits due to influenza-like illness (ILI) has increased. No influenza-associated pediatric deaths were reported. No influenza-associated institutional outbreaks or school closures were reported.

Table 1: Summary of Texas Influenza (Flu) and Influenza-like Illness (ILI) Activity for the Current Week

Texas Surveillance Component	Change from Previous Week	Current Week	Previous Week†	Page of Report
Statewide ILINet Activity Indicator assigned by CDC (intensity of influenza-like illness)	No Change	Minimal	Minimal	--
Percentage of specimens positive for influenza by hospital laboratories	▼ 0.16%	0.05%	0.21%	1
Percentage of visits due to ILI (ILINet)	▲ 0.17%	1.77%	1.60%	3
Number of regions reporting increased flu/ILI activity	▲ 1	1	0	5
Number of regions reporting decreased flu/ILI activity	▼ 2	0	2	5
Number of variant/novel influenza infections	No cases reported	0	0	5
Number of ILI/influenza outbreaks	No change	0	0	5
Number of pediatric influenza deaths	No change	0	0	7

### Laboratory Results

#### Influenza

\*In response to the COVID-19, influenza testing at Texas Public Health Laboratories has significantly decreased to increase capacity for SARS-CoV-2 testing. Please note, this will affect data in Table 3 and Figure 2.

Hospital laboratories across Texas voluntarily report influenza tests (antigen, culture, and PCR) to the National Respiratory and Enteric Virus Surveillance System (NREVSS). Providers throughout Texas also submit specimens for influenza testing (PCR) to Texas public health laboratories, including the Texas Department of State Health Services (DSHS) state laboratory in Austin and the nine Texas Laboratory Response Network (LRN) laboratories. The results reported by Texas NREVSS participants and public health laboratories for the current week are summarized in the two tables below. Additional influenza test results (rapid tests, culture, PCR) and ILI activity were reported from providers and public health departments throughout the state (see county map at the end of this report).

Table 2: Influenza Testing Performed by Texas Hospital Laboratories for the Current Week

	Week 24	Season to Date Week Ending: June 19, 2021
Number of labs reporting flu tests	16	
Number of specimens tested	1855	89487
Number of positive specimens (%)†	1 (0.05%)	884 (0.99%)
Percentage of total tests that were antigen detection tests	6.04%	
<b>Positive specimens by type/subtype [n (%)]</b>		
<b>Influenza A</b>	<b>0 (0.00%)</b>	<b>220 (24.89%)</b>
Subtyping performed	0 (0.00%)	9 (4.09%)
A (H1N1)	0 (0.00%)	4 (44.44%)
A (H3N2)	0 (0.00%)	5 (55.56%)
Subtyping not performed	0 (0.00%)	211 (95.91%)
<b>Influenza B</b>	<b>1 (100.00%)</b>	<b>664 (75.11%)</b>

Table 3: Influenza Testing Performed by Texas Public Health Laboratories for the Current Week

	Week 24	Season to Date Week Ending: June 19, 2021
Number of labs reporting flu tests	3	
Number of specimens tested	29	8628
Number of positive specimens (%) <sup>†</sup>	0 (0.00%)	5 (0.06%)
<b>Positive specimens by type/subtype/lineage [n (%)]</b>		
<b>Influenza A</b>	<b>0 (0.00%)</b>	<b>0 (0.00%)</b>
Subtyping performed	0 (0.00%)	0 (0.00%)
A (H1N1)	0 (0.00%)	0 (0.00%)
A (H3N2)	0 (0.00%)	0 (0.00%)
Subtyping not performed	0 (0.00%)	0 (0.00%)
<b>Influenza B</b>	<b>0 (0.00%)</b>	<b>5 (100.00%)</b>
Lineage testing performed	0 (0.00%)	5 (100.00%)
B/Victoria	0 (0.00%)	5 (100.00%)
B/Yamagata	0 (0.00%)	0 (0.00%)
Lineage testing not performed	0 (0.00%)	0 (0.00%)
<b>Other</b>	<b>0 (0.00%)</b>	<b>0 (0.00%)</b>

<sup>†</sup>Other denotes specimens with coinfections (i.e. one specimen was positive for both influenza A (H1N1) and influenza A (H3N2))

*Other Respiratory Viruses*

The NREVSS system collects information on a variety of respiratory viruses in addition to influenza including parainfluenza virus, respiratory syncytial virus (RSV), rhinovirus, human metapneumovirus (HMPV), seasonal coronavirus, and respiratory adenovirus. The results for the current week are summarized below.

Table 4: Non-Influenza Respiratory Virus Testing Performed by Texas NREVSS Laboratories for the Current Week

Virus	Number of Laboratories Testing	Tests Performed	Positive Tests	Percentage of Tests Positive
Adenovirus (respiratory)	11	1370	37	2.70%
HMPV	10	1357	12	0.88%
Parainfluenza virus	11	1370	247	18.03%
Rhino/enterovirus	9	1342	321	23.92%
RSV <sup>†^</sup>	14	1707	271	15.88%
Seasonal coronavirus (does not include MERS-CoV or COVID-19)	9	1342	79	5.89%

<sup>†</sup>RSV tests displayed in the table are a combination of antigen detection, PCR, and culture tests. Some non-NREVSS reporters also contribute to the RSV data.

<sup>^</sup>Numbers and percentage may differ from the weekly RSV report. The weekly RSV report may be accessed at <https://www.dshs.state.tx.us/RSV/disease/rsv-Data.aspx>.

## U.S. Outpatient Influenza-like Illness Surveillance Network (ILINet)

\* Please note, the COVID-19 pandemic is affecting healthcare seeking behavior. The number of persons and their reasons for seeking care in the outpatient and ED settings is changing. These changes impact data from ILINet in ways that are difficult to differentiate from changes in illness levels, therefore ILINet data should be interpreted with caution.

Table 5: Texas ILINet Reporting and Patient Visit Summary for the Current Week

Week 24	
Number of providers reporting	46
Number of providers reporting patient visits	46
Number (%) of providers with at least one ILI case	34 (73.91%)
Percentage of all visits due to ILI	1.61%
Texas ILINet baseline <sup>‡</sup> , 2020-2021	5.26%

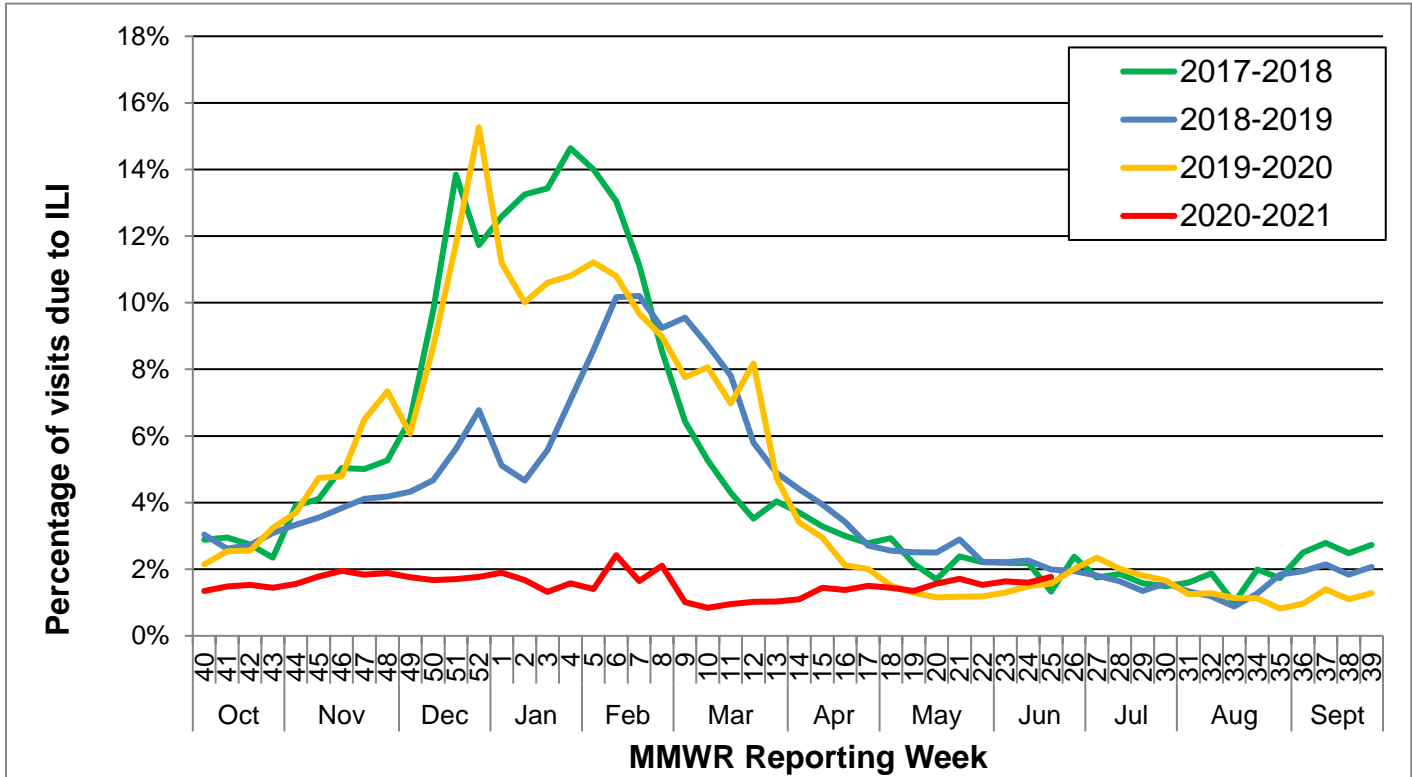
<sup>‡</sup>The baseline is the mean percentage of patient visits for ILI during non-influenza weeks for the previous three seasons plus two standard deviations. A “non-influenza week” is defined as a week that accounted for less than 2% of the season’s total number of specimens that tested positive for influenza

Table 6: Percentage of Visits for Influenza-like Illness Reported by Texas ILINet Providers (as of 6/25/2021 1:30 PM)

Week	Providers Reporting	Number of ILI Cases by Age Group (Years)					Total ILI (all ages)	Total Patients	ILI
		0-4	5-24	25-49	50-64	65+			
202040	65	97	203	158	69	38	565	41933	1.35%
202041	79	108	220	231	116	68	743	50142	1.48%
202042	74	138	218	227	104	58	745	48710	1.53%
202043	64	107	203	183	75	46	614	42505	1.44%
202044	76	120	204	244	99	53	720	46159	1.56%
202045	82	141	270	320	109	65	905	50804	1.78%
202046	80	154	286	353	146	99	1038	53186	1.95%
202047	78	140	256	328	130	82	936	50873	1.84%
202048	79	96	206	281	145	73	801	42465	1.89%
202049	71	127	208	284	108	67	794	45075	1.76%
202050	80	123	201	290	122	98	834	49791	1.68%
202051	65	122	166	204	87	59	638	37525	1.70%
202052	75	114	143	256	122	87	722	40748	1.77%
202053	65	116	146	258	115	104	739	39032	1.89%
202101	79	125	194	303	178	72	872	52244	1.67%
202102	66	111	124	159	82	63	539	40913	1.32%
202103	77	112	203	258	126	67	766	48554	1.58%
202104	75	87	175	199	86	47	594	42326	1.40%
202105	80	147	372	441	180	56	1196	49396	2.42%
202106	41	38	68	40	27	10	183	11117	1.65%
202107	40	11	6	14	6	7	44	2089	2.11%
202108	62	117	133	112	47	41	450	44452	1.01%
202109	78	89	129	100	45	28	391	46514	0.84%

Week	Providers Reporting	Number of ILI Cases by Age Group (Years)					Total ILI (all ages)	Total Patients	ILI
		0-4	5-24	25-49	50-64	65+			
202110	60	97	114	80	34	23	348	36336	0.96%
202111	73	130	137	114	52	26	459	45077	1.02%
202112	73	110	125	119	52	27	433	42008	1.03%
202113	76	153	222	106	46	19	546	49683	1.10%
202114	74	208	280	175	67	23	753	52299	1.44%
202115	73	192	251	212	56	24	735	53575	1.37%
202116	59	200	238	150	37	32	657	43740	1.50%
202117	72	238	252	195	64	27	776	53688	1.45%
202118	73	257	246	160	50	30	743	55093	1.35%
202119	72	302	247	171	72	21	813	51836	1.57%
202120	57	369	214	143	48	25	799	46776	1.71%
202121	59	276	196	163	52	31	718	46804	1.53%
202122	64	372	192	131	34	29	758	46401	1.63%
202123	48	374	151	104	30	25	684	42812	1.60%
202124	44	440	165	109	38	32	784	44411	1.77%

Figure 1: Percentage of Visits Due to Influenza-like Illness Reported by Texas ILINet Participants, 2017–2021 Seasons



## Reports from Health Service Regions

Reports were received from four Health Service Regions (HSRs) during week 24.

Table 7: Influenza Activity Compared to week 23 by Health Service Region (HSR)

Influenza Activity Comparison	Health Service Region (HSR)
Increased	8
Same	2/3 and 11
Decreased	
Unsure	1

## Variant Influenza Viruses

No variant or novel influenza viruses have been detected in Texas during the 2020-2021 season.

## Institutional Outbreaks and School Closures

No institutional outbreaks or school closures were reported in week 24 during the 2020-2021 season.

## P&I Mortality Surveillance Data

**\*Deaths due to COVID-19 may be classified as pneumonia deaths or influenza deaths (deaths due to “flu” or “flu-like illness”) in the absence of positive SARS-CoV-2 test results.**

Pneumonia and influenza (P&I) death data are obtained from death certificates of Texas residents whose underlying or contributing cause(s) of death is reported as pneumonia or influenza. P&I deaths are identified based on ICD-10 multiple cause of death codes. P&I deaths are based on ICD-10 pneumonia and influenza mortality codes.

Six thousand nine hundred forty-seven (6,947) P&I deaths have been reported in Texas during the 2020-2021 influenza season.

Table 8: Texas P&I Deaths Occurring Sept. 27, 2020 – June 19, 2021\* by Age

Age Category (years)	Number of P&I Deaths <sup>+</sup>	Mortality Rate (per 100,000)
0 - 4	16	0.73
5 - 17	10	0.18
18 - 49	448	3.32
50 - 64	1272	24.13
65 +	5201	129.57
Overall	6947	22.75

\*NOTE: Data are provisional and subject to change, errors, and duplicates

<sup>+</sup> If the cell count is less than 10, the number of P&I deaths is suppressed and <10 is written in the cell.

Table 9: Texas P&I Deaths Occurring Sept. 27, 2020 – June 19, 2021\* by Health Service Region (HSR)

HSR	Number of P&I Deaths	Mortality Rate (per 100,000)
1	257	27.27
2/3	2013	22.77
4/5N	615	37.14
6/5S	1660	20.73
7	720	19.16
8	689	21.88
9/10	363	22.37
11	630	24.60
Unknown	0	0
Overall	6947	22.75

\*NOTE: Data are provisional and subject to change, errors, and duplicates

## Influenza-Associated Pediatric Mortality

No influenza-associated pediatric deaths were reported during week 24.

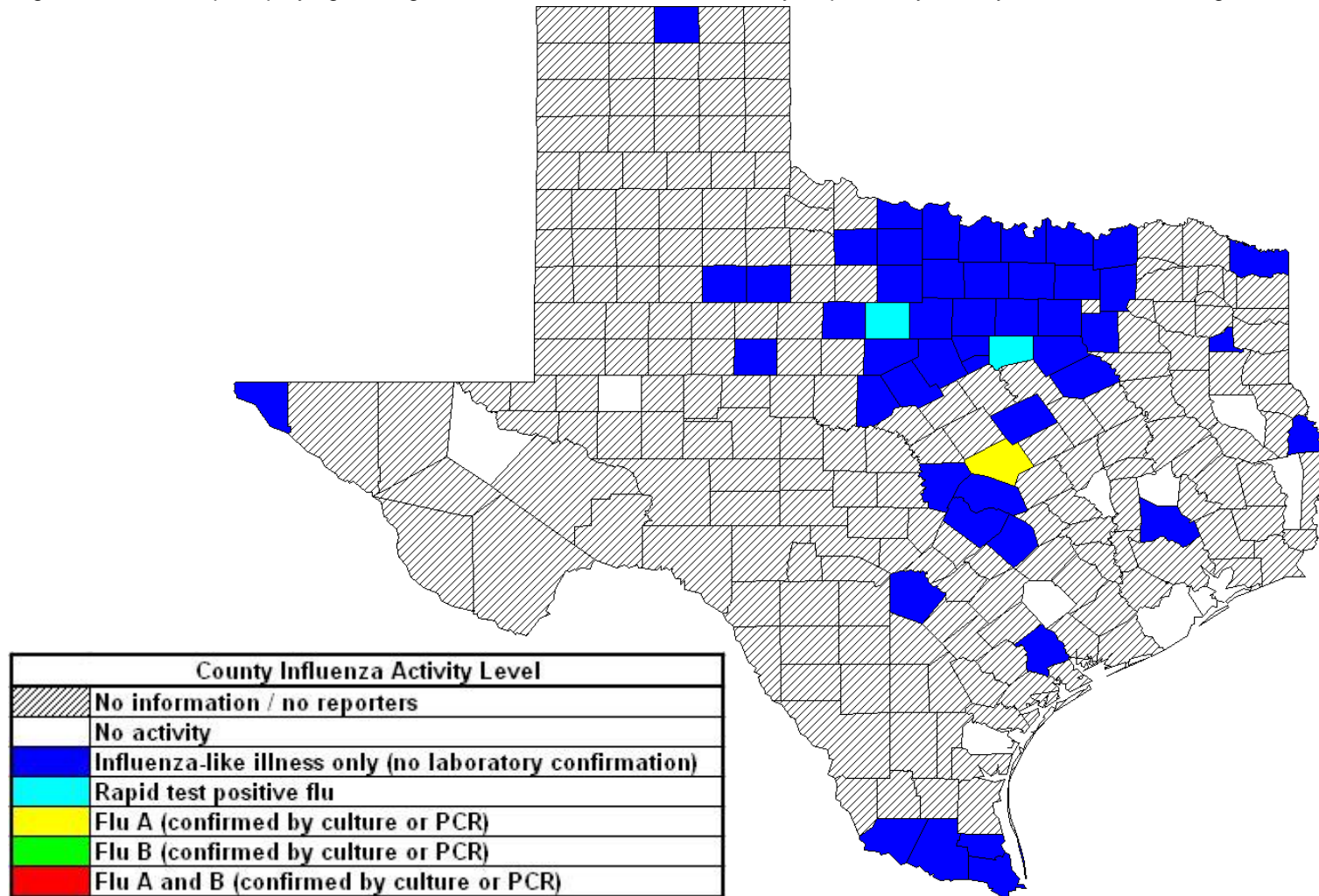
No influenza-associated pediatric mortalities have been reported in Texas during the 2020-2021 influenza season. Cases of influenza-associated pediatric mortality (children <18 years of age) are reportable year-round by law in Texas.

Table 10: Influenza-Associated Pediatric Deaths Reported in Texas during the 2020-2021 Season

Month of Pediatric Death	Influenza A (H1N1)	Influenza A (H3N2)	Influenza A (Not Subtyped)	Influenza B	Influenza, Not Typed / Not Differentiated	Influenza virus co-infection: A (not subtyped) and B	Total, All Influenza Types / Subtypes
<b>2020</b>							
October	0	0	0	0	0	0	0
November	0	0	0	0	0	0	0
December	0	0	0	0	0	0	0
<b>2021</b>							
January	0	0	0	0	0	0	0
February	0	0	0	0	0	0	0
March	0	0	0	0	0	0	0
April	0	0	0	0	0	0	0
May	0	0	0	0	0	0	0
June	0	0	0	0	0	0	0
<b>Total</b>	<b>0</b>	<b>0</b>	<b>0</b>	<b>0</b>	<b>0</b>	<b>0</b>	<b>0</b>

## Statewide Influenza Activity Map

Figure 2: Texas Map Displaying the Highest Level of Influenza or ILI Activity Reported by County for the Week Ending June 19, 2021 (MMWR Week 24)



Please note: The majority of influenza cases are not reportable by law in Texas. This map contains data from sentinel sites and only displays influenza and ILI cases that were reported to public health. Positive laboratory results are reported according to specimen collection date, or date received in the laboratory if the former is unknown.

# Texas Influenza Surveillance Components and Measures

Activity codes (see <http://www.cdc.gov/flu/weekly/overview.htm>)

Statewide influenza activity level

A code reported weekly by states and territories to CDC indicating the geographic spread of influenza in the state. Levels are no activity, sporadic, local, regional, and widespread.

ILINet Activity Indicator

A statewide level of influenza-like illness intensity (on a scale of 1-10, with 1 being the lowest level) assigned to each state weekly by CDC based on data reported through ILINet.

## Morbidity

Novel/variant influenza

Thorough investigations are performed on all cases of novel/variant influenza. *This condition is reportable by law in Texas.*

Texas ILINet

Providers voluntarily report weekly to CDC's ILINet system on the number of outpatient visits for ILI and total outpatient visits. Providers may submit up to 5 specimens per month for influenza testing. See <http://www.dshs.state.tx.us/idcu/disease/influenza/surveillance/ILINet/> for information on how to become an ILINet provider.

ILI activity

Non-ILINet providers report ILI or influenza data weekly to local or regional health departments.

Outbreaks

Healthcare, schools, childcare, and correctional facilities report ILI and influenza outbreaks to health departments in Texas. *This condition is reportable by law in Texas.*

## Mortality

Pneumonia and Influenza (P&I) Mortality Surveillance

The DSHS Vital Statistics Unit collects death certificate information for all deaths on Texas residents from various partners such as funeral homes and local registrars around the state. The death certificates are then sent to the National Center for Health Statistics (NCHS) where the cause of death and underlying causes of death on the death certificates are coded with ICD-10 mortality codes. Once death certificates are coded, the information is sent back to DSHS Center for Health Statistics (CHS). CHS produces a Weekly Pneumonia and Influenza (P&I) Death Report and sends it to the State Influenza Surveillance Coordinator for inclusion in the Texas Weekly Flu Report. P&I deaths are identified based on ICD-10 multiple cause of death codes, and in particular, pneumonia and influenza mortality codes. Delays inherent in death reporting and coding practices may cause the number of reported P&I deaths to vary considerably each week.

Influenza-associated pediatric deaths

Deaths that are associated with influenza in children < 18 years of age are reported to health departments in Texas. *This condition is reportable by law in Texas.* <http://www.dshs.state.tx.us/idcu/disease/IAPM/>

## Laboratory

DSHS Austin laboratory

Providers voluntarily submit specimens to the DSHS Austin laboratory for influenza PCR testing throughout the season. Providers sign up for this program through their local health departments.

Laboratory Response Network (LRN) laboratories

Providers voluntarily submit specimens to one of the 9 Texas LRNs for influenza PCR testing throughout the season. Providers sign up for this program through their local health departments.

NREVSS

Laboratories voluntarily report influenza and other respiratory virus data weekly through the CDC's online NREVSS reporting system. **Laboratories sign up for this program by contacting DSHS.** <http://www.cdc.gov/surveillance/nrevss/>

## **Recommended Resources**

*Texas Department of State Health Services*

DSHS influenza page: <http://www.texasflu.org/>

Influenza surveillance data and reports: <http://www.dshs.state.tx.us/idcu/disease/influenza/surveillance/>

Map of Texas Health Service Regions: <http://www.dshs.state.tx.us/regions/state.shtm>

*Centers for Disease Control and Prevention*

National FluView weekly flu report: <http://www.cdc.gov/flu/weekly/>

Variant influenza viruses: <http://www.cdc.gov/flu/swineflu/variant.htm>

Avian influenza viruses: <http://www.cdc.gov/flu/avianflu/index.htm>

Swine influenza viruses: <http://www.cdc.gov/flu/swineflu/index.htm>

Infection Control in Healthcare Facilities: <http://www.cdc.gov/flu/professionals/infectioncontrol/>

Seasonal Flu Information for Schools and Childcare Providers: <http://www.cdc.gov/flu/school/index.htm>

*World Health Organization*

Influenza page: <http://www.who.int/topics/influenza/en/>

Disease Outbreak News: <http://www.who.int/csr/don/en/>