

# Texas Reportable Conditions Reporting Process

## Frequently Asked Questions

### How Can I Tell What Conditions Need to be Reported to DSHS?

The **Texas Notifiable Conditions List**, which identifies the conditions that must be reported to the DSHS, and their reporting time frames is available online [here](#). Or scan the QR code at right.



2024 Texas Notifiable  
Conditions List

### Reporting Time Frames

1. **Report Immediately:** Call 1-800-705-8868
2. **Report within 1 workday:** Phone or Fax Report Form to DSHS\*
3. **Report within 1 week:** Fax or Mail Report Form to DSHS\*

\*May also be submitted to DSHS as an Electronic Lab Report.

### Should notifiable condition reports be sent to the DSHS Laboratory?

**No.** Reports must be sent to the disease reporting contact of **the patient's county of residence**. **Always call 1-800-705-8868 to report "call immediately" conditions.**

Fax or mail a completed Infectious Disease Report Form (EPI-1 or EPI-2) to the health department contact listed for that county.

- Notifiable Conditions Reporting contacts by county available online at <http://www.dshs.state.tx.us/idcu/investigation/conditions/contacts/>.
- EPI Reporting Forms available at <https://www.dshs.texas.gov/notifiable-conditions/reporting-forms>.

**NOTE: EPI report forms are to be used for most reportable conditions. Please refer to the reporting forms web link above to obtain reporting forms for chickenpox and HIV/STDs.**

### What Type of Specimens Must be Submitted to the DSHS Laboratory?

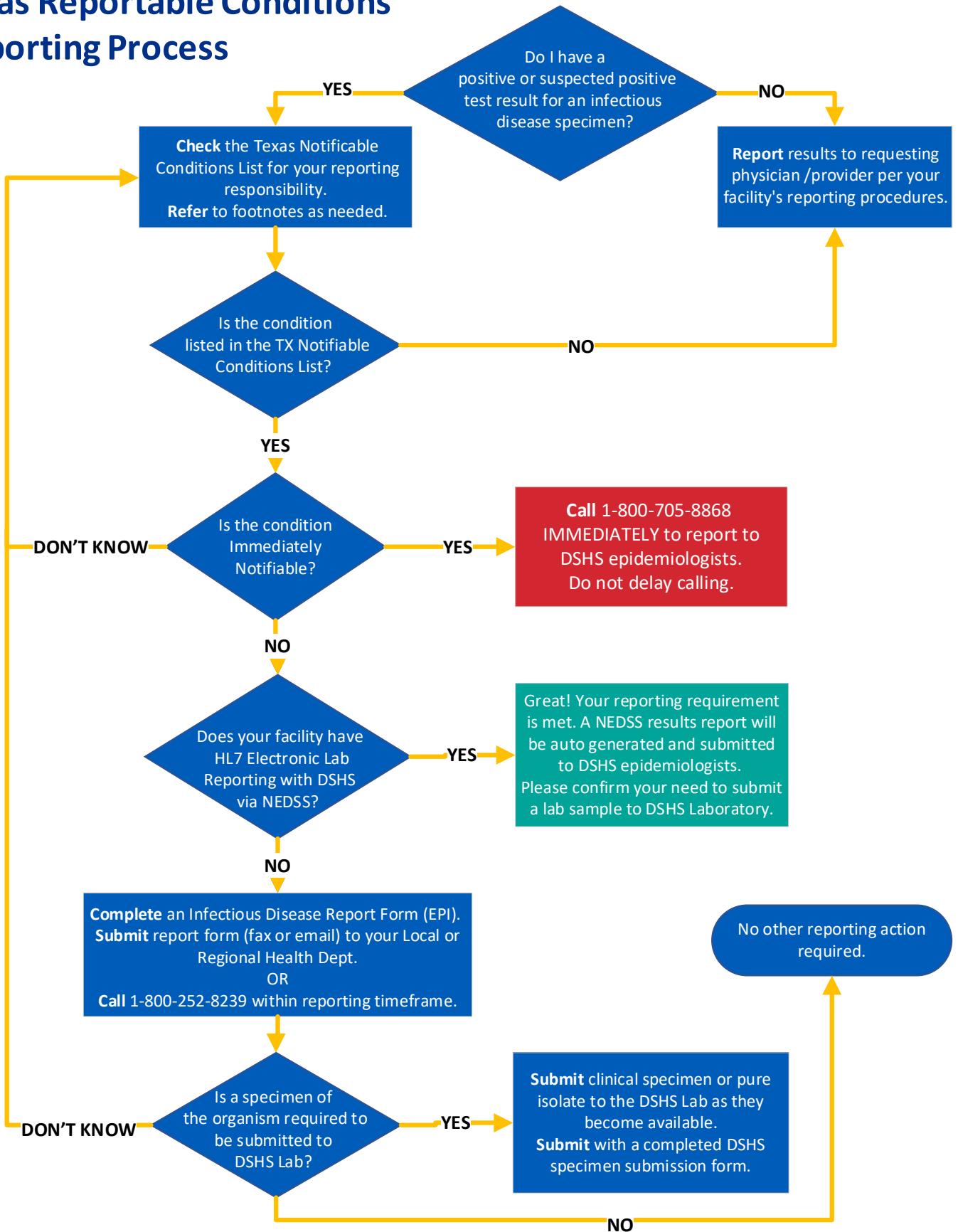
Submit **pure cultures** (or clinical specimens) to the DSHS Laboratory as they become available. (Footnote 3 of the Texas Notifiable Conditions List identifies these specimens).

- All specimens must be submitted with a **completed** DSHS specimen submission form.
- Providers must have a DSHS Submitter ID Account.
- Report forms or lab results are **not acceptable replacements** for DSHS submission forms.
- For *Haemophilus*, only isolates from normally sterile sites are accepted (e.g., blood or CSF).

### Questions About . . .

- |   |   |
|---|---|
| Electronic Lab Reporting:               | Visit <a href="#">Electronic Laboratory Reporting for HL7 Submitters</a>   Texas DSHS |
| Specimen Submissions:                   | (512) 776-7598 or 1-888-963-7111 ext. 7578 (toll free)                                |
| Submitter Accounts or Submission Forms: | (512) 776-7578 or <a href="mailto:LabInfo@dshs.texas.gov">LabInfo@dshs.texas.gov</a>  |

# Texas Reportable Conditions Reporting Process



# Required TX Notifiable Specimens for Submission to DSHS Laboratory

Required Isolates or Clinical Specimens	Submission Form	Reporting/Specimen Submission and Submission Form Tips
<i>Bacillus anthracis</i> isolates	G-27A	<ul style="list-style-type: none"> <li>• <b>Call Immediately: 1-800-705-8868</b></li> <li>• <b>Must be shipped as Category A.</b></li> <li>• Select <i>Bacillus anthracis</i> in Section 5 of G-27A.</li> </ul>
<i>Bacillus cereus</i> isolates that may contain anthrax toxin genes from patients with severe disease or death	G-27A	<ul style="list-style-type: none"> <li>• <b>Call Immediately: 1-800-705-8868</b></li> <li>• Select "Bacillus cereus suspected of containing anthrax genes" in Section 5 of G-27A.</li> </ul>
<i>Clostridium botulinum</i> isolates	G-27A	<ul style="list-style-type: none"> <li>• <b>Call Immediately: 1-800-705-8868</b></li> <li>• <b>Must be shipped as Category A.</b></li> <li>• Select appropriate boxes in Sections 3 and 4 of G-27A.</li> </ul>
<i>Brucella</i> species isolates	G-27A	<ul style="list-style-type: none"> <li>• <b>Notify DSHS Within 1 Workday.</b></li> <li>• <b>Must be shipped as Category A.</b></li> <li>• Select <i>Brucella</i> spp. in Section 5 of G-27A.</li> </ul>
<i>Candida auris</i> isolates	G-2E	<ul style="list-style-type: none"> <li>• <b>Notify DSHS Within 1 Workday.</b></li> <li>• Select "Isolates" in Section 4, Box 1</li> <li>• Select "Candida Identification by MALDI" in Section 4, Box 1.</li> </ul>
<i>Corynebacterium diphtheriae</i> isolates	G-2B	<ul style="list-style-type: none"> <li>• <b>Call Immediately: 1-800-705-8868</b></li> <li>• Indicate in Section 2 that specimen is associated with an outbreak or for surveillance, per epidemiologist guidance.</li> <li>• Select <i>Corynebacterium diphtheriae</i> in Section 4.1 of G-2B.</li> </ul>
<i>Francisella tularensis</i> isolates	G-27A	<ul style="list-style-type: none"> <li>• <b>Call Immediately: 1-800-705-8868</b></li> <li>• <b>Must be shipped as Category A.</b></li> <li>• Select <i>Francisella tularensis</i> in Section 5 of G-27A.</li> </ul>
<i>Haemophilus influenzae</i> isolates (invasive) from normally sterile sites in children younger than 5 years old	G-2B	<ul style="list-style-type: none"> <li>• Submit <b>invasive specimens</b> from <b>normally sterile sites</b> in <b>children younger than 5 years</b> only. (e.g., blood or CSF)</li> <li>• Indicate in Section 2 that specimen is associated with an outbreak or is for surveillance.</li> <li>• Select <i>Haemophilus influenzae</i> in Section 4.1 of G-2B.</li> </ul>
<i>Listeria monocytogenes</i> isolates	G-2B	<ul style="list-style-type: none"> <li>• Indicate in Section 2 of G-2B that specimen is associated with an outbreak/for surveillance.</li> <li>• Select <i>Listeria</i> in Section 9 of G-2B.</li> </ul>
<i>Mycobacterium tuberculosis</i> complex, isolates of all complex members	G-MYCO	<ul style="list-style-type: none"> <li>• <b>Notify DSHS Within 1 Workday.</b></li> <li>• <b>Must be submitted as Category A.</b></li> <li>• Check the "MTB Genotyping Only/for Compliance" option in Section 5 of G-MYCO.</li> </ul>
<i>Neisseria meningitidis</i> isolates from normally sterile sites or purpuric lesions	G-2B	<ul style="list-style-type: none"> <li>• <b>Call Immediately: 1-800-705-8868</b></li> <li>• Indicate in Section 2 of G-2B that specimen is associated with an outbreak or is for surveillance.</li> <li>• Select <i>Neisseria meningitidis</i> in Section 4.1 of G-2B.</li> </ul>
<i>Salmonella</i> species isolates, including <i>Salmonella</i> positive specimens (by CIDT)	G-2B	<ul style="list-style-type: none"> <li>• Indicate in Section 2 of G-2B that specimen is associated with an outbreak or is for surveillance.</li> <li>• Select <i>Salmonella</i> in Section 4.1 of G-2B.</li> </ul>
Shiga toxin-producing <i>Escherichia coli</i> (All <i>E. coli</i> O157:H7 isolates and any <i>E. coli</i> isolates/specimens that demonstrate Shiga toxin activity)	G-2B	<ul style="list-style-type: none"> <li>• <b>Must be shipped as Category A.</b></li> <li>• Indicate in Section 2 of G-2B that specimen is associated with an outbreak or is for surveillance.</li> <li>• Select "Shiga toxin-producing <i>Escherichia coli</i>" in Section 4.1.</li> </ul>
<i>Staphylococcus aureus</i> with a vancomycin MIC greater than 2µg/mL (VISA and VRSA)	G-2B	<ul style="list-style-type: none"> <li>• Indicate in Section 2 of G-2B that specimen is associated with an outbreak or is for surveillance.</li> <li>• Select <i>Staphylococcus aureus</i> in Section 4.1 of G-2B.</li> </ul>
<i>Streptococcus pneumoniae</i> isolates from normally sterile sites in children younger than 5 years old	G-2B	<ul style="list-style-type: none"> <li>• Indicate in Section 2 of G-2B that specimen is associated with an outbreak or is for surveillance.</li> <li>• Select <i>Streptococcus pneumoniae</i> in Section 4.1 of G-2B.</li> </ul>
<i>Vibrio</i> species isolates; also submit <i>Vibrio</i> CIDT positive specimens.	G-2B	<ul style="list-style-type: none"> <li>• <b>Notify DSHS Within 1 Workday.</b></li> <li>• Indicate in Section 2 of G-2B that specimen is associated with an outbreak or is for surveillance.</li> <li>• Select <i>Vibrio</i> sp. or <i>Vibrio cholera</i> in Section 4.1 of G-2B.</li> </ul>
<i>Yersinia pestis</i> isolates	G-27A	<ul style="list-style-type: none"> <li>• <b>Call Immediately: 1-800-705-8868</b></li> <li>• <b>Must be shipped as Category A.</b></li> <li>• Select <i>Yersinia pestis</i> in Section 5 of G-27A.</li> </ul>