



**2024 DSHS Arbovirus Activity Report  
Week #52 (ending December 28, 2024)  
Report Date: December 31, 2024**

**Table 1. 2024 Arbovirus Activity Summary, Texas, Week 52**

Arbovirus	Mosquito Pools	Avian	Veterinary	Sentinel Chicken	Human					
					Febrile Illness	Neurologic Illness	Severe Dengue	TOTAL (HUMAN)	Deaths	PVD <sup>2</sup>
California Serogroup <sup>1</sup>								0		
Chikungunya					21			21		
Dengue					135		8	143	1	
Eastern Equine Encephalitis			3					0		
St. Louis Encephalitis	8			1				0		
West Nile	3314	37	22	15	42	127		169	25	97
Zika								1		
<b>TOTAL REPORTS</b>	<b>3322</b>	<b>37</b>	<b>25</b>	<b>16</b>	<b>198</b>	<b>127</b>	<b>8</b>	<b>334</b>	<b>26</b>	<b>97</b>

<sup>1</sup>California Serogroup includes California encephalitis, Jamestown Canyon, Keystone, La Crosse, snowshoe hare, and trivittatus viruses.

<sup>2</sup>PVD - Presumptive viremic blood donors are people who had no symptoms at the time of donating blood through a blood collection agency, but whose blood tested positive when screened for the presence of West Nile virus or Zika virus. Unless they meet the case reporting criteria, they are not counted as a case for official reporting purposes and are not included in the "Total (HUMAN)" column.

Note: Human mortality from arboviral conditions is aggregated and reported monthly once documentation has been received and verified.

For more detailed information about West Nile virus, including past weekly and annual reports, please visit <https://www.dshs.texas.gov/mosquito-borne-diseases/dshs-arbovirus-weekly-activity-reports>

For more detailed information about Zika, please visit <http://www.texaszika.org/>

Please note that arbovirus weekly reports are weekly snapshots of preliminary DSHS data and may change at any time due to quality assurance procedures. The final weekly report of each year is not complete data for the year and should not be used to draw conclusions regarding annual activity. Refer to our annual summary reports for finalized, complete data or contact [wv@dshtexas.gov](mailto:wv@dshtexas.gov) to request additional data or with any questions.

**Table 2. 2024 Aedes-Associated Arbovirus Activity by County†, Week 52**

County	CHIKV*		DENV**		ZIKV*		
	M	H	M	H	M	H	PVD
Bexar		1		13			
Brazoria				1			
Cameron				4			
Collin		6		10			
Cooke				2			
Dallas		6		19			
Denton		1		7			
Ector				1			
El Paso				5			
Fort Bend		3		9			
Grayson				1			
Harris				1			
Hays				3			
Hidalgo				4			
Kaufman				1			
Karnes				1			
Liberty				1			
Maverick				2			
McCulloch				1			
McMullen				1			
Mills				1			
Montgomery				7			
Nueces		1		4			
Parker				1			
Rains				1			
Robertson				1			
Smith				3			

Tarrant		1		9			
Taylor				1			
Titus				1			
Tom Green				2			
Travis		1		18			
Val Verde				2			
Victoria				1			
Webb				1			
Williamson		1		3			
Total Number of Reports	0	21	0	143	0	1	0

M - mosquito H- human PVD- Presumptive viremic blood donors

CHIKV - Chikungunya Virus

DENV - Dengue Virus

ZIKV - Zika Virus

\*All reported cases are imported.

\*\*Includes case transmitted by mosquitoes in Texas: Cameron

†County level data is not reported for conditions with <5 cases reported in a year.

**Table 3. 2024 Other Arbovirus Activity by County†, Week 52**

County	CAL		EEEV				SLEV			WNV									
	M	H	M	V	SC	H	M	SC	H	M	A	V	SC	H					
														WNF	WNND	PVD#	TOTAL		
Angelina										0		1				1			1
Armstrong										0		1							0
Bell										49							1		1
Bexar										50				1		3	4		4
Bowie										0						1			1
Brazoria										7							3		0
Brazos										27									0
Briscoe										0		1							0
Brooks										0		1							0
Burleson										1									0
Cameron										1				1					1
Clay										0						1			1
Collin										99						5	5		5
Comal										0							1		0
Cooke										8		1		1					1
Crosby										1									0
Dallam										0							1		0
Dallas										699		1		6	10	6			16
Denton										83				1	7	4			8
Eastland										0		1							0
Ector										0							1		0
El Paso									2	4				1					1
Ellis										48							2		0
Erath										0		2							0
Floyd										1									0
Fort Bend										35						2			2
Galveston										1	4		15				2		0
Grayson										0		1							0
Grimes										3									0
Guadalupe										0							1		0
Hale										1									0
Hardin										0		1							0
Harris										686	35	2		3	28	25			31

Haskell						0		1				0
Hays						9				2		2
Henderson						0					1	1
Hidalgo						0				2	1	3
Hood						0					1	1
Hopkins						0		1				0
Houston			2			0						0
Hunt						20						0
Jefferson						22					1	0
Jim Wells						19					1	0
Johnson						82		1			2	0
Kaufman						4					1	0
King						0	1					0
Kleberg						6						0
Leon						1						0
Lubbock					6	55		1			2	2
Lynn						0					1	0
Madison			1			0						0
Martin						0				1		1
McLennan						0		1		1	3	2
Midland						23				1		1
Moore						0					1	0
Montague						0				1		1
Montgomery						270				2	8	15
Navarro						0					1	1
Palo Pinto						0					1	1
Nueces						20						1
Orange						18						2
Parker						0					1	
Potter						3						0
Randall						3		1				1
Red River						0		1				0
Rockwall						4						0
San Patricio						6						0
Smith						0	1					0
Tarrant						714		1		11	34	5
Taylor						1						0
Terry						0					1	1

Tom Green										0					1		1
Travis										101				4	2	4	6
Webb										8							0
Walker										0				1	1		2
Wichita										43					9	1	9
Williamson										75		1		2			2
Young										0					1		1
Total Number of Reports	0	0	0	3	0	0	8	1	0	3314	37	22	15	42	127	97	169

M - mosquito A-avian V-veterinary SC- sentinel chicken H- human WNF - West Nile Fever WNND - West Nile Neuroinvasive Disease

CAL - California Serogroup Viruses

EEEV - Eastern Equine Encephalitis Virus

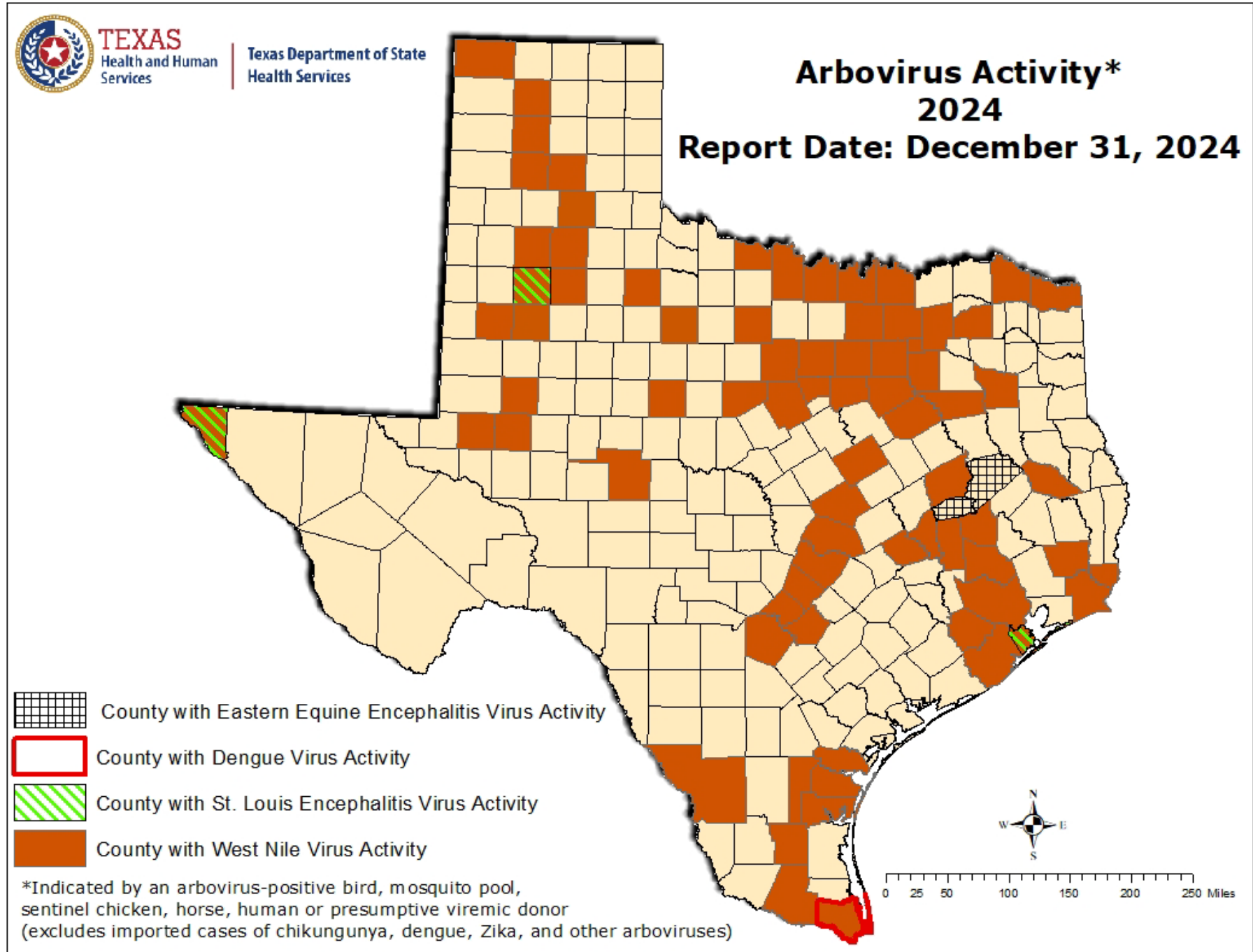
SLEV - St. Louis Encephalitis Virus

WNV - West Nile Virus

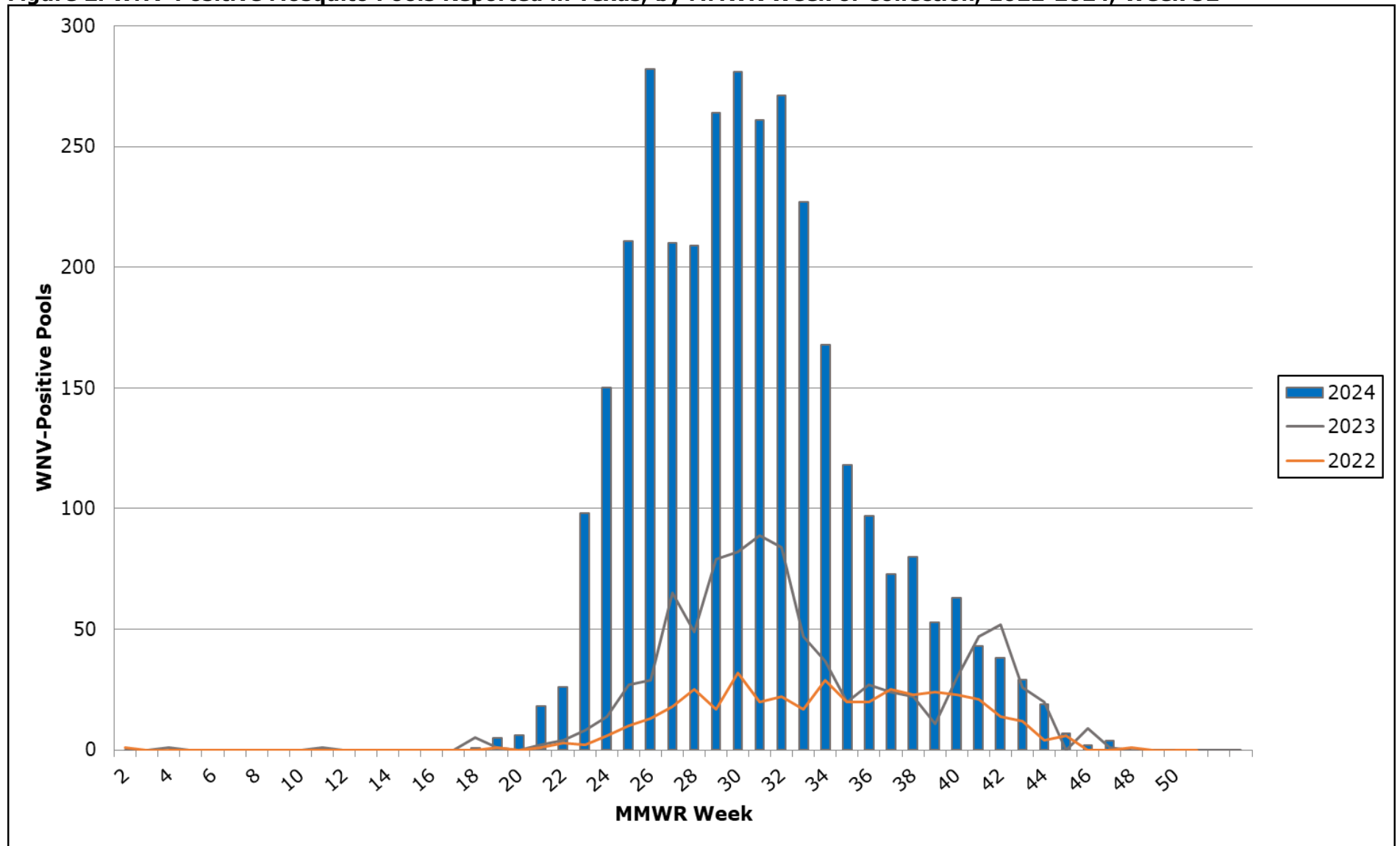
†County level data is not reported for conditions with <5 cases reported in a year.

‡PVDs are not included in the "Total" column.

Figure 1. Texas Counties Reporting Arbovirus Activity, Week 52



**Figure 2. WNV-Positive Mosquito Pools Reported in Texas, by MMWR Week of Collection, 2022-2024, Week 52**





**Figure 3. Human Cases of West Nile Virus Reported in Texas, by MMWR Week of Onset, 2022-2024, Week 52**

