



Community Education and Engagement Programs

Jennifer Fearday

Community Engagement Manager

Community Engagement Department

Mejores vidas. Juntos.

Our Mission

The Parkinson's Foundation makes life better for people with Parkinson's disease by improving care and advancing research toward a cure.

In everything we do, we build on the energy, experience and passion of our global Parkinson's community.



We have everything you need to live better with Parkinson's.

What We Do

For Tomorrow

Advancing research toward a cure

For Today

Improving care for everyone with Parkinson's

For Us All

Building on the energy, experience and passion of our global community



Who Gets Parkinson's?

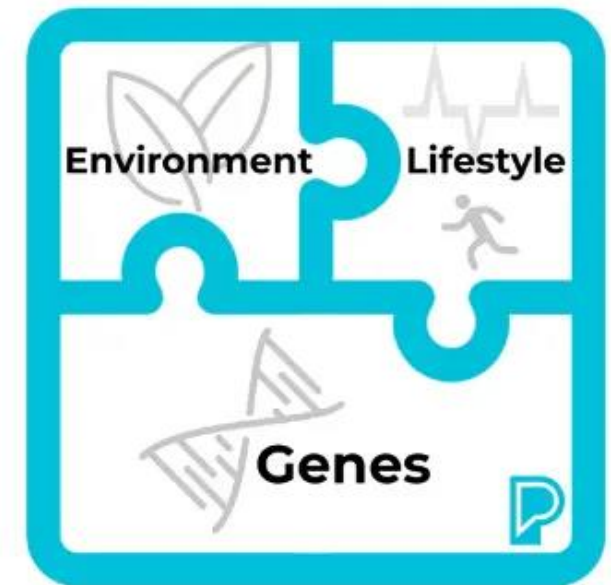
- An estimated 1 million people in the United States have Parkinson's disease
- Parkinson's can affect anyone regardless of race, ethnicity or gender
- Most people are diagnosed when they are older (around 60 years old)
 - A small number (2-10%) are much younger



What Causes Parkinson's Disease?

The cause of Parkinson's is unknown, but scientists believe that a combination of genetic and environmental factors contribute to increased risk.

- **Genetic:** Genetic factors cause about 10 to 15 percent of all Parkinson's (inherited, gene mutation)
- **Environmental:** Prolonged exposure to an environmental toxin
- **Other risk factors:** older age, traumatic brain injury



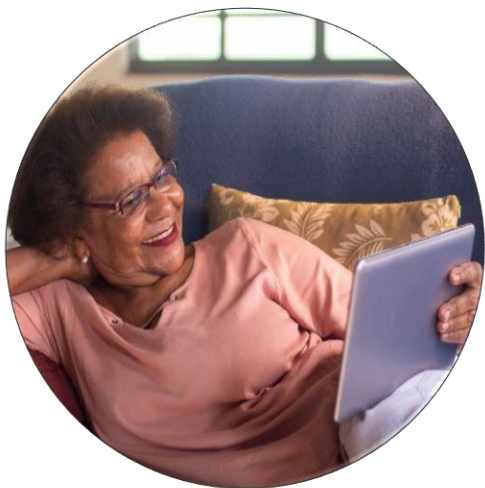
Why is it necessary to learn about Parkinson's disease?

- Bring awareness.
- Improve early diagnosis and care.
- Address health disparities in diagnosis, treatment and clinical trial participation.



Community Education

Providing Information & Resources to the Community



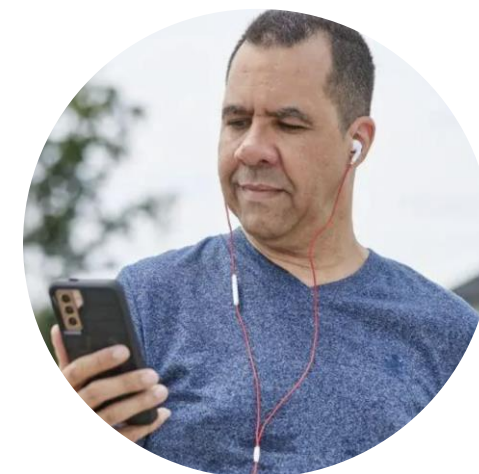
**National
Programs**



**Community-Based
Programs**



Publications



**Virtual
Learning**

Community Education Programs



EP Salud en Casa

- Monthly virtual educational and wellness program



Podcast

- Audio expert interviews



Hacia Adelante

- In-person educational program

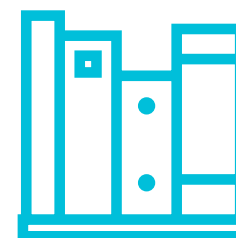
Publications

PD Library

Explore and download Parkinson's disease resources.

Guía para recién diagnosticados (New!)

(*Newly Diagnosed Guide*) This guide is designed to help people with Parkinson's and their loved ones who are beginning their PD journey.



Guía de seguridad hospitalaria (New!)

(*Hospital Safety Guide*) This guide offers practical tools and information to help prepare for and navigate a hospital stay.



Parkinson.org/Espanol



Learn more about the [Comunidad hispana y latina y Parkinson](#) (newest page!)

Hispanic Outreach and Engagement Initiatives



Hacia
Adelante



Embajadores
de la
Parkinson



Promotores
de Salud



PD
GENERation



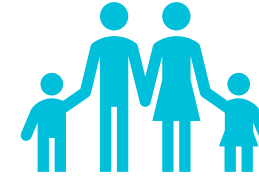
Spanish
Advisory

← **Community Based**

National →

Staying Connected

Communications

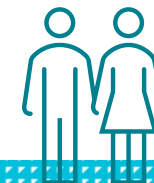
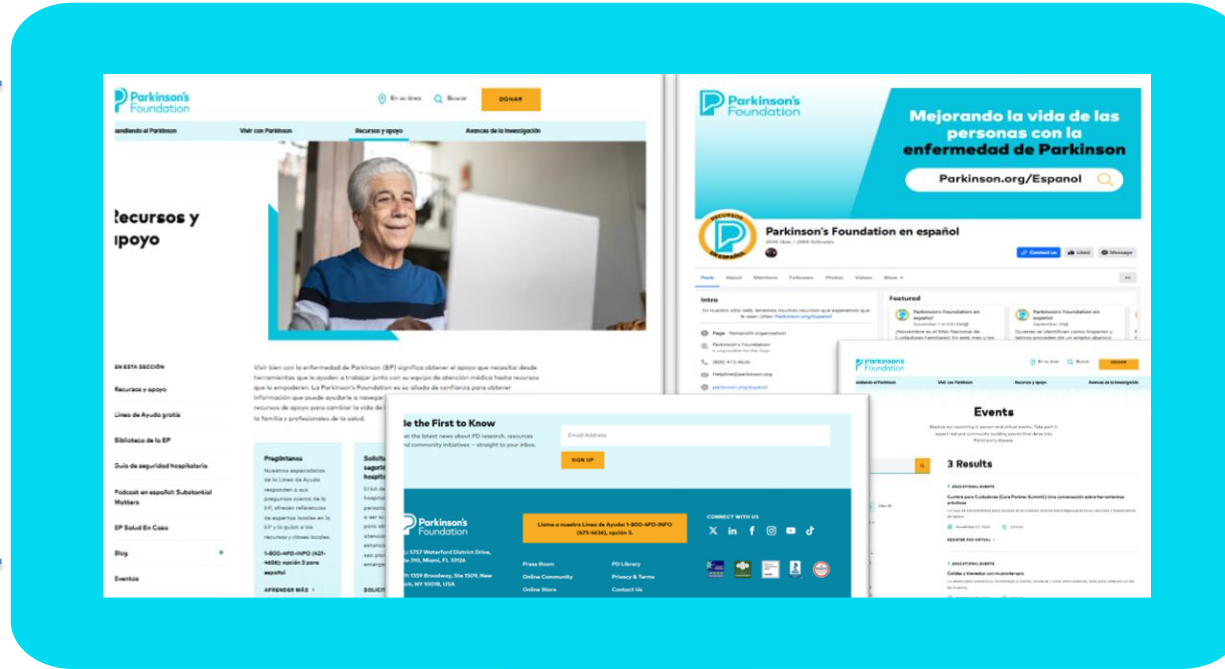


Social Media

/Español



/Eventos



Next step



Access virtual learning to advance knowledge about Parkinson's disease (PD).



Create a pathway for Border of Health (BOH) staff to become PF Ambassadors.



Empower BOH staff to deliver education and raise awareness within their communities.

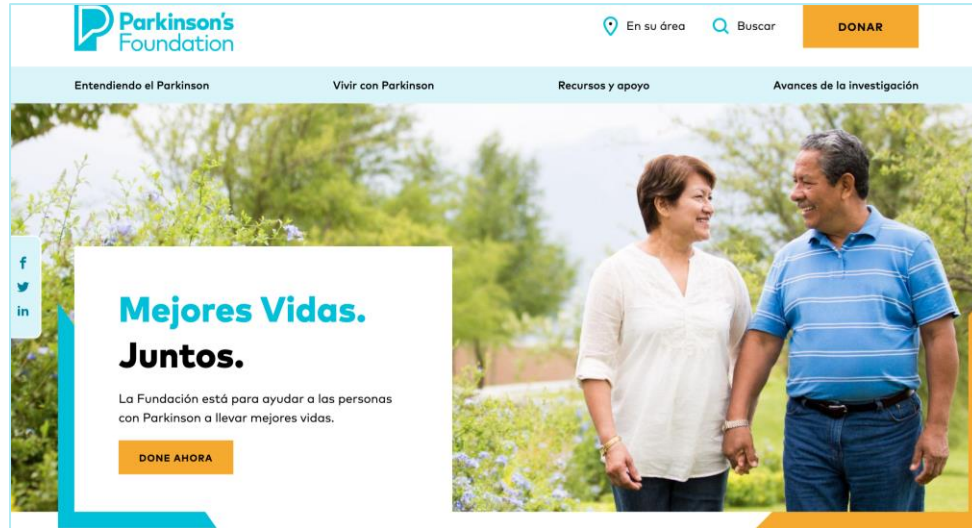


Foster trust and raise awareness about Parkinson's research.



Continued engagement at National and Chapter level.

We are here for you!



[Parkinson.org/Espanol](https://www.parkinson.org/Espanol)



1-800-4PD-INFO
(1-800-473-4636), opción 3 para español
Helpline@Parkinson.org

