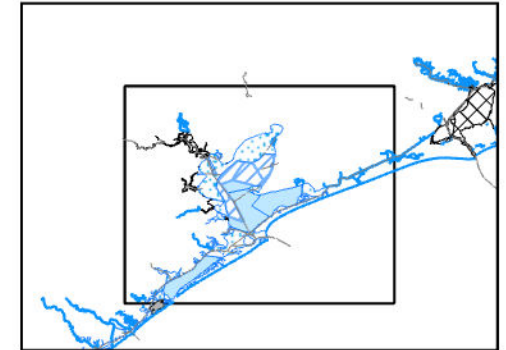
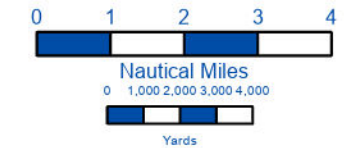
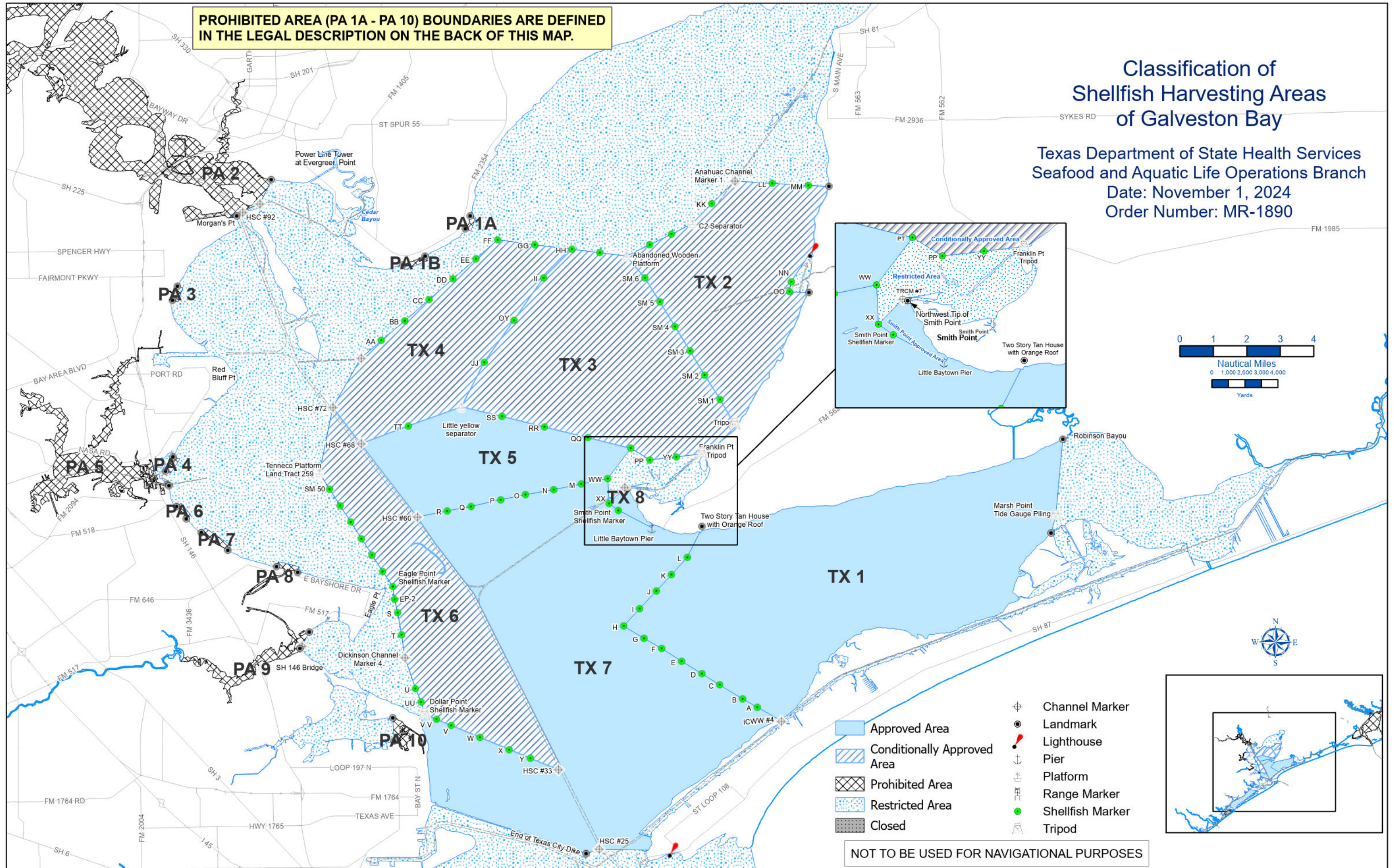


**PROHIBITED AREA (PA 1A - PA 10) BOUNDARIES ARE DEFINED IN THE LEGAL DESCRIPTION ON THE BACK OF THIS MAP.**

# Classification of Shellfish Harvesting Areas of Galveston Bay

Texas Department of State Health Services  
 Seafood and Aquatic Life Operations Branch  
 Date: November 1, 2024  
 Order Number: MR-1890



- Channel Marker
- Landmark
- Lighthouse
- Pier
- Platform
- Range Marker
- Shellfish Marker
- Tripod
- Approved Area
- Conditionally Approved Area
- Prohibited Area
- Restricted Area
- Closed

NOT TO BE USED FOR NAVIGATIONAL PURPOSES

**CLASSIFICATION OF SHELLFISH HARVESTING AREAS  
OF  
GALVESTON BAY**

**TEXAS DEPARTMENT OF STATE HEALTH SERVICES  
SEAFOOD AND AQUATIC LIFE OPERATIONS BRANCH**

**DATE: NOVEMBER 1, 2024      ORDER NUMBER: MR-1890**

The status of shellfish growing waters in Texas estuaries is subject to change by the Texas Department of State Health Services at any time. These changes may be due to high rainfall and runoff, flooding, hurricanes and other extreme weather conditions, major spills, red tides, or the failure or inefficient operation of wastewater treatment facilities. Current status of shellfish harvesting areas may be obtained from your local Texas Parks and Wildlife Department office or by calling, **toll-free (in state only), 1-800-685-0361**.

**PROHIBITED AREAS:** All areas not specifically designated as Prohibited, Restricted, Conditionally Approved, or Approved are classified as Prohibited and are closed to the harvesting of molluscan shellfish.

PA 1A: That area off Umbrella Point from fishing pier (29.682127° N, 94.867264° W) to fishing pier (29.675655° N, 94.869723° W) out to 300 yards offshore.

PA 1B: That area off Houston Point from fishing pier (29.662091° N, 94.889700° W) to fishing pier (29.657681° N, 94.900785° W) out to 300 yards offshore.

PA 2: That area of the Houston Ship Channel and Tabbs Bay upstream of a line from the easternmost overhead power cable tower at Evergreen Point, to Cedar Bayou Channel Marker 8, to Houston Ship Channel Marker 92 to Morgan's Point.

PA 3: That area between the single story white house with the orange tile roof (29.647220° N, -95.012700° W) and the two-story white house with the blue roof (29.640204° N, 95.015096° W) out to 300 yards offshore.

PA 4: That area between the two-story white house with the red roof (29.555195° N, 95.018661° W) and the two-story yellow house with brown roof (29.555195° N, 95.018661° W) out to 300 yards offshore.

PA 5: That area westward from a line beginning on a point of land on the north side of the Clear Lake channel entrance (29.548810° N, 95.017800° W) southward to a point of land on the south side of the Clear Lake Channel entrance (29.548030° N, 95.017000° W).

PA 6: That area between the white house with orange tile roof (29.537629° N, 95.013086° W) and the boat ramp by the painted beach barn (29.531671° N, 95.008295° W) out to 500 yards offshore.

PA 7: That area between the three-story white house with blue roof (29.524713° N, 95.000978° W) and the fishing pier with the red roof (29.516015° N, 94.987748° W) out to 500 yards offshore.

PA 8: That area between the three-story house with orange tile roof (29.507818° N, 94.963633° W) and southeast end of Spillway Park out to 400 yards offshore.

PA 9: That area of Dickinson Bayou upstream from the fishing pier with the blue roof (29.475362° N, 94.947175° W) to Dickinson Bayou Channel Marker 27 to a point of land (29.467120° N, 94.951779° W).

PA 10: That area of Moses Lake east of a line from north shoreline (29.432740° N, 94.905760° W) to the south shoreline (29.421199° N, 94.905089° W).

All residential subdivision channels and harbor areas up to a radius of 300 yards offshore from the shoreline where the channels become land bound.

All areas within a 50-yard radius of recreational cabins and houseboats located on the bay.

All marked areas around transient or temporarily occupied structures (such as manned drilling rigs) which are potential pollution sources, but which are not indicated on this map because of their transient nature. These areas are described by separate Marine Order. Details can be obtained from the Texas Department of State Health Services or the Texas Parks and Wildlife Department.

**RESTRICTED AREAS:** (closed to the harvesting of shellfish for direct marketing)

The area of East Galveston Bay east of a line from a point on shore (29.571065° N, 94.572865° W), south to the tide gauge piling at Marsh Point, to a point on shore (29.524429° N, 94.578692° W) of Marsh Point.

All of the Intracoastal Waterway where it becomes land bound at Bolivar Peninsula.

All area South of a line beginning at the Port Bolivar Lighthouse, to Houston Ship Channel (HSC) Marker #25, to the end of the Texas City Dike. All areas excluding the prohibited areas described above and inshore of a line from the Dollar Point shoreline, to Dollar Point Shellfish Marker, to GAL Shellfish Marker (SM) UU, to GAL SM U, to Dickinson Channel Marker 4, to GAL SM T, to GAL SM S, to GAL SM EP 2, to Eagle Point Shellfish Marker, to GAL SM 55, to GAL SM 54, to GAL SM 53, to GAL SM 52, to GAL SM 51, to GAL SM 50, to Tenneco Platform State Land Tract 259 (29.55447° N, 94.94244° W), to HSC Marker 72, to Channel Marker 7, to GAL SM AA, to GAL SM BB, to GAL SM CC, to GAL SM DD, to GAL SM EE, to GAL SM FF, to GAL SM GG, to GAL SM HH, to GAL SM 20, to Abandoned Wooden Platform (29.66220° N, 94.78966° W), to GAL SM 7, to GAL SM 8, to C-2 Separator (29.67832° N, 94.75646° W), to GAL SM KK, to Anahuac Channel Marker 1, to GAL SM LL, to GAL SM MM, eastward to the shore. All areas inside a line starting at the Fereday Lighthouse tower (29.66479° N, 94.69696° W) north of the Double Bayou Channel entrance, to GAL SM NN, to GAL SM OO, to the three story light green house (29.64401° N, 94.69897° W) south of the Double Bayou Channel entrance. All areas inside a line starting from the shore at the tripod piling on Frankland Point, to GAL SM YY, to GAL SM PP, to GAL SM PT, to GAL SM WW, to GAL SM XX, to Trinity River Channel Marker #7, to northwest tip of Smith Point, along the shoreline eastward, returning to tripod piling on Frankland Point.

**CONDITIONALLY APPROVED AREAS:** (Subject to status changes based upon meteorological or hydrological conditions) If unsure of current status, contact your local Texas Parks and Wildlife Department office, or call, toll-free (in state only), 1-800-685-0361.

**TX 2:**

TX 2 is located inside of a line from the abandoned Wooden platform (29.66220° N, 94.78966° W), to GAL SM 7, to GAL SM 8, to C-2 Separator (29.67832° N, 94.75646° W), GAL SM KK, to Anahuac Channel Marker 1, to GAL SM LL, to GAL SM MM, eastward to the shore, southward along the shoreline to the Fereday lighthouse tower (29.66479° N, 94.69696° W) north of the Double Bayou Channel entrance, to GAL SM NN, to GAL SM OO, to the three story light green house (29.64401° N, 94.69897° W) south of the Double Bayou Channel entrance, southwest along the shoreline, to the tripod piling in the Trinity River Channel, to GAL SM 1, to GAL SM 2, to GAL SM 3, to GAL SM 4, to GAL SM 5, to GAL SM 6, and returning to the Abandoned Wooden Platform (29.66220° N, 94.78966° W).

**TX 3:**

TX 3 is located inside of a line from GAL SM PT, to GAL SM QQ, to GAL SM RR, to GAL SM SS, to the Little Yellow Separator (29.58758° N, 94.87165° W), to GAL SM JJ, to GAL SM OY, to GAL SM II, to GAL SM HH, to GAL SM 20, to the Abandoned Wooden Platform (29.66220° N, 94.78966° W), to GAL SM 6, to GAL SM 5, to GAL SM 4, to GAL SM 3, to GAL SM 2, to GAL SM 1, to the tripod piling in the Trinity River Channel, southwest along the shoreline, to the tripod piling located on Frankland Point in the Trinity River Channel, to GAL SM YY, to GAL SM PP, and returning to GAL SM PT.

**TX 4:**

TX 4 is located inside of a line beginning at HSC Marker 72, to HSC Marker 68, to GAL SM TT, to the Little Yellow Separator (29.58758° N, 94.87165° W), to GAL SM JJ, to GAL SM OY, to GAL SM II, to GAL SM HH, to GAL SM GG, to GAL SM FF, to GAL SM EE, to GAL SM DD, to GAL SM CC, to GAL SM BB, to GAL SM AA, to Channel Marker #7 (29.61128° N, 94.92178° W), and to HSC Marker 72.

**TX 6:**

TX 6 is located inside a line beginning at HSC Marker 33, following the HSC, to HSC Marker 60, to HSC Marker 68, to HSC Marker 72, to Tenneco Platform State Land Tract 259 (29.55447° N, 94.94244° W), to GAL SM 50, to GAL SM 51, to GAL SM 52, to GAL SM 53, to GAL SM 54, to GAL SM 55, to Eagle Point Shellfish Marker, to GAL SM EP 2, to GAL SM S, to GAL SM T, to Dickinson Channel Marker 4, to GAL SM U, to GAL SM UU, to Dollar Point Shellfish Marker, to GAL SM VV, to GAL SM V, to GAL SM W, to GAL SM X, to GAL SM Y, and returning to HSC Marker 33.

**APPROVED AREAS:** For current status, contact your local Texas Parks and Wildlife Department office, or call, toll-free (in state only), 1-800-685-0361.

**TX 1:**

TX 1 is an area inside of line beginning at the Intracoastal Waterway Channel Marker 4 at Siever's Cove, to GAL SM A, to GAL SM B, to GAL SM C, to GAL SM D, to GAL SM E, to GAL SM F, to GAL SM G, to GAL SM H, to GAL SM I, to GAL SM J, to GAL SM K, to GAL SM L, to the two story tan house with orange roof (29.52772° N, 94.75216° W), along the shoreline to a point on shore (29.571065° N, 94.572865° W), south to the tide gauge piling at Marsh Point, to a point on shore (29.524429° N, 94.578692° W) then following the shoreline to Intracoastal Waterway Channel Marker 4 at Siever's Cove.

**TX 5:**

TX 5 is an area inside of a line beginning at GAL SM PT, to GAL SM WW, to GAL SM M, to GAL SM N, to GAL SM O, to GAL SM P, to GAL SM Q, to GAL SM R, to HSC Channel Marker 60, to HSC Channel Marker 68, to GAL SM TT, to the Little Yellow Separator (29.58758° N, 94.87165° W), to GAL SM SS, to GAL SM RR, to GAL SM QQ, and returning to GAL SM PT.

**TX 7:**

TX 7 is an area inside of a line beginning at GAL SM WW, to GAL SM XX, to Smith Point Shellfish Marker, to the end of Little Baytown Pier (29.52717° N, 94.77710° W), to the shore, eastward along the shoreline to the two story tan house with orange roof (29.52772° N, 94.75216° W), to GAL SM L, to GAL SM K, to GAL SM J, to GAL SM I, to GAL SM H, to GAL SM G, to GAL SM F, to GAL SM E, to GAL SM D, to GAL SM C, to GAL SM B, to GAL SM A, to Intracoastal Waterway (ICWW) Marker 4 at Siever's Cove, along the shoreline to a line from the Port Bolivar Lighthouse, to HSC Channel Marker 25, to the end of the Texas City Dike, along the north shoreline of the Texas City Dike, to the Texas City Levee and along the levee shoreline, to the tripod piling off Dollar Point, to GAL SM VV, to GAL SM V, to GAL SM W, to GAL SM X, to GAL SM Y, to HSC Marker 33, to HSC Marker 60, to GAL SM R, to GAL SM Q, to GAL SM P, to GAL SM O, to GAL SM N, to GAL SM M, and returning to GAL SM WW.

**TX 8:**

TX 8 is an area inside of a line beginning at the northwest tip of Smith Point, to Trinity River Channel Marker #7, to SM XX, to the Smith Point Shellfish Marker, to the end of the Little Baytown Pier (29.52717° N, 94.77710° W), to the shore, then following the shoreline to the northwest tip of Smith Point.